



ATLANTA BOTANICAL GARDEN

SENSORY FRIENDLY EVENT HAPPENINGS

Wednesday, June 3, 3 p.m. – 5 p.m.

WELCOME!



\$11.95
Child 3 – 12
\$14.95 Adult
**FREE for Garden
members**

We are thrilled you will be joining us for our sensory friendly event! When you arrive, purchase tickets at the **Hardin Visitor Center** and proceed into the Visitor Center. Maps will be available inside to help you find activities.

JUNE IN THE GARDEN



June is a beautiful time to visit the Atlanta Botanical Garden. You'll see many flowers in bloom, especially in the Rose Garden, and depending on the weather, you may see birds, squirrels and even bullfrogs in our ponds. There will be fountains with running water and lots of nature sounds.

ART STATION



Visit the art station in the **Trustees Garden** to create your very own broccoli painted tree to take home!

“Cardboard Silly Show” with [Teller Productions](#)



Visit the **Children's Garden Amphitheatre** for a special performance at 4 p.m. This all-ages variety show comes together with an array of sketches, song, stories, music, improv, and plenty of cardboard puppets!

SEED PLANTING



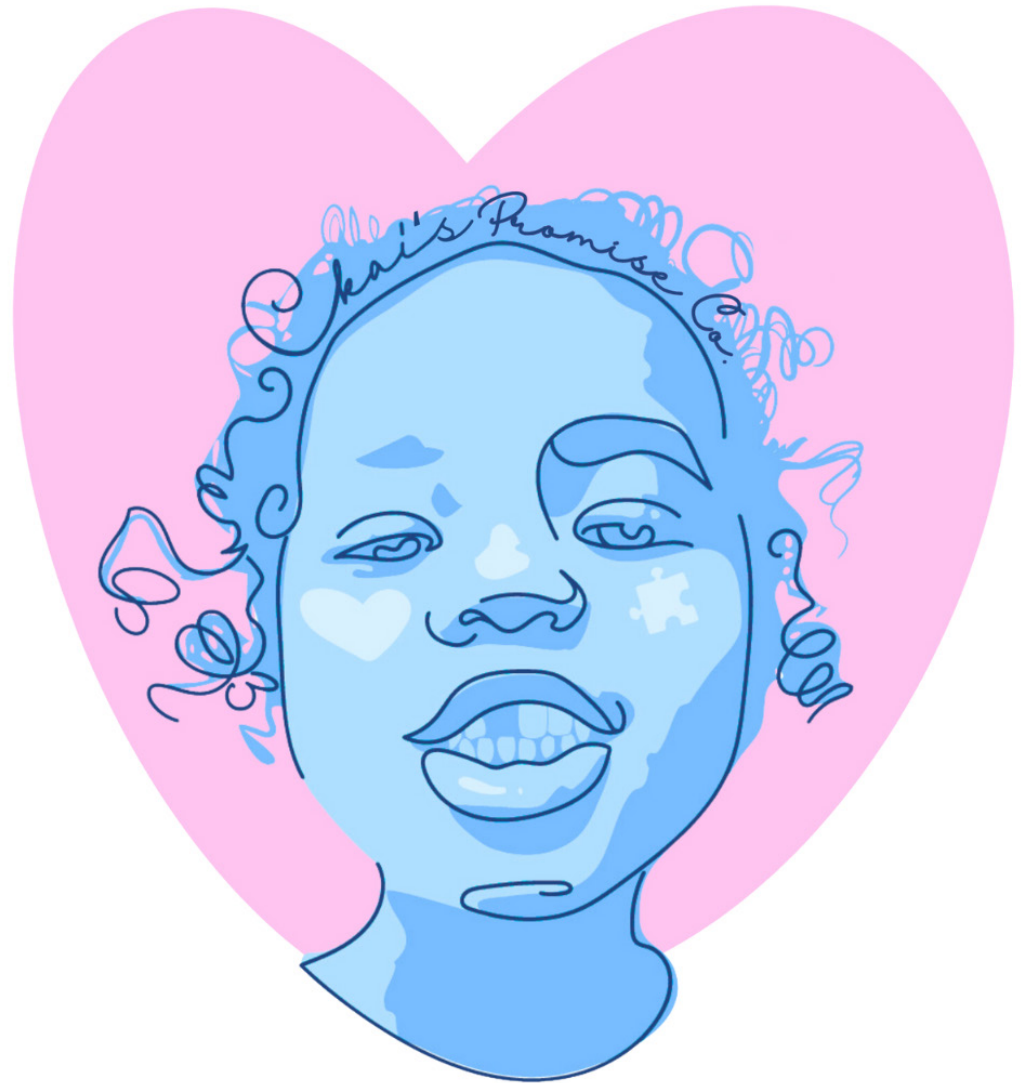
Visit the **Children's Garden** to plant some spring seeds to take home. Kids will also get the opportunity to explore seeds up close with some seed sorting activities!

BEE DISCOVERY STATION AND HONEY TASTING



In the **Children's Garden** we'll learn about bees while also getting the opportunity to taste local honey!

SENSORY FUN with KAI's Promise & Kindness and Intervention



Join KAI in the **Children's Garden** for sensory and movement-based activities.

MUSICAL INSTRUMENT DISCOVERY



Visit the **Trustees Garden** to explore musical instruments made from plants from around the world!

QUIET SPACE



Take a break in the **Sheffield Botanical Library**. The children's corner includes an outstanding collection of fiction and nonfiction books and puppets. A special kid-sized bench invites young readers to spend time with books in the library.

LOU GLENN CHILDREN'S GARDEN



The interactive **Children's Garden** has a water painting wall, a bouncy rope or clatter bridge, mosaic snake walkway, a balsa wood building area and a tree house slide and play area. Bring a swimsuit if you want to play in the Splash Pad!

LOU GLENN CHILDREN'S GARDEN (cont.)



NIKI IN THE GARDEN



Join the Garden's celebration of its 50th anniversary with the return of [*Niki in the Garden*](#)! Springing to life along the pathways as well as indoors are more than 40 joyous sculptures by the late artist Niki de Saint Phalle—many making an encore from the 2006 exhibit—in one of the largest showings of her colorful outdoor work in North America. Come see what our jubilee, where art meets nature, is all about!

FUQUA CONSERVATORY LOBBY AND ORANGERIE



The **Fuqua Conservatory** is a garden under glass. Inside the lobby are tanks of rare and endangered amphibians. The hallway leading to the **Desert House** is the **Orangerie** where you can find economically important plants like cinnamon and vanilla. There are misters in this room that periodically go off to keep the room moist.

FUQUA CONSERVATORY TROPICAL ROTUNDA



The **Tropical Rotunda** is a warm, moist room with misters periodically making noise and spraying water to keep the plants wet. You may also hear poison dart frogs calling. The tiny frogs are no longer toxic and mostly stay hidden in the plants.

FUQUA CONSERVATORY DESERT HOUSE



The Desert House features succulents from Africa and Madagascar. Many of the plants are spiky and should not be touched. The air in this room is much drier than the Tropical Rotunda. You may also see a radiated tortoise in the Desert House.

FUQUA ORCHID CENTER



The **Fuqua Orchid Center** is the spot to see beautiful flowers and orchids! Depending on the weather outside, you may hear the windows in the roof opening or closing and may hear and feel the misters spraying water to keep the room moist. Take some time to smell some of these orchids. Their smells are unique and wonderful!

KENDEDA CANOPY WALK



The **Canopy Walk** is a walkway through the treetops. It starts at level ground and then stays high as the ground below it dips. At its highest point, the walkway is 40 feet high, then it gradually wraps back down to the ground.

FRIENDLY FACES



Volunteers and staff are on hand to help you and your family. We are at the discovery stations and walking throughout the Garden. Please feel welcome to say hello or ask questions!