



ATLANTA BOTANICAL GARDEN

ANNUAL REPORT

2021







MISSION

The mission of the Atlanta Botanical Garden is to develop and maintain plant collections for display, education, research, conservation and enjoyment.

VISION

The vision of the Atlanta Botanical Garden is to be an iconic destination and global leader, dynamically connecting people with plants in support of a thriving planet.

In 2021, community was key.

More than 760,000 guests enjoyed the beauty of our gardens in Atlanta and Gainesville, nearly reaching record-high pre-pandemic annual visitation levels. People of all ages, from all walks of life, marveled at the majestic tulip poplars in Storza Woods, the sun-drenched succulents in Skyline Garden, and the brilliant blooms in the Fuqua Orchid Center. Our visitation base reflected the wonderful diversity of our city, and we were honored to offer immersive plant-filled experiences that connected people with the natural world—and with each other.

As the region's premier open-air cultural destination, the Atlanta Botanical Garden made a significant difference in 2021. When families with young children were in need of safe, fun outdoor activities, we shifted Garden Grooves and other children's programming to the expanse of the Great Lawn and saw up to a 50% increase in attendance. For the second year in a row, we extended daily operating hours until 9 p.m., Tuesday through Sunday, with Cocktails in the Garden and live music every evening. More than 100 different performing groups, representing almost every musical genre, had the opportunity to connect with audiences *al fresco*, underscoring the Garden's essential role in the local arts landscape.

Ever since our blockbuster *Chihuly in the Garden* exhibition in 2004, we have embraced the magical interplay of horticulture and art in all its forms. This year, the works of two talented visual artists were presented on our Midtown campus for *SUPERnatural: Aerial Art in Motion, Glass Art in Bloom*. A massive, colorful SkyNet created by Patrick Shearn of Poetic Kinetics soared above the Kendeda Canopy Walk, while Jason Gamrath's large-scale botanically-inspired glass sculptures sparkled across our 30 acres. At our Gainesville location, *Wings of Wonder: Towering Works of Nature* featured another super-sized display, with larger-than-life avian creations by the

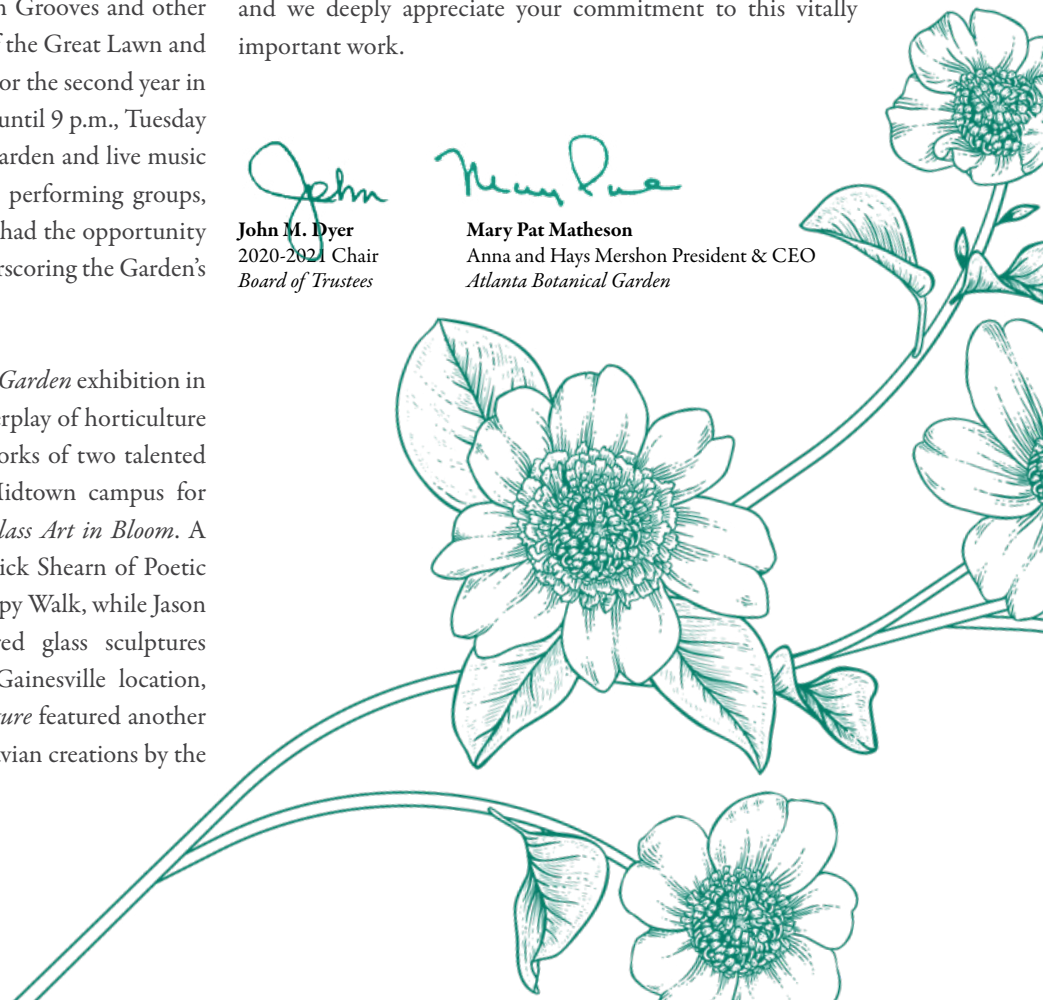
artist duo known as The Myth Makers. These carefully curated exhibitions once again demonstrated how art in the Garden drives attendance, contributes to a very special sense of place, and captivates our community.

Beyond the guest experience, great advances were made in all aspects of the Garden's multidimensional mission during this eventful year. Our Conservation & Research team grew by leaps and bounds, adding several new roles focused on protecting critically imperiled plants, and we led collaborative efforts with regional and international significance, most notably serving as the lead partner mobilizing more than 200 organizations in the Global Conservation Consortium for Magnolia. Garden educators provided innovative STEM enrichment to young people in both virtual and in-person formats, and our Community Outreach initiatives worked in neighborhoods that have historically been food deserts to strengthen access to fresh fruits, herbs, and vegetables.

Further highlights from 2021 can be found on the following pages, and we truly believe that each and every success is made possible by you, our friends and donors. Your support allows us to serve our entire community with one-of-a-kind programming and best-in-class facilities—A Garden For All—and we deeply appreciate your commitment to this vitally important work.


John M. Dyer
2020-2021 Chair
Board of Trustees

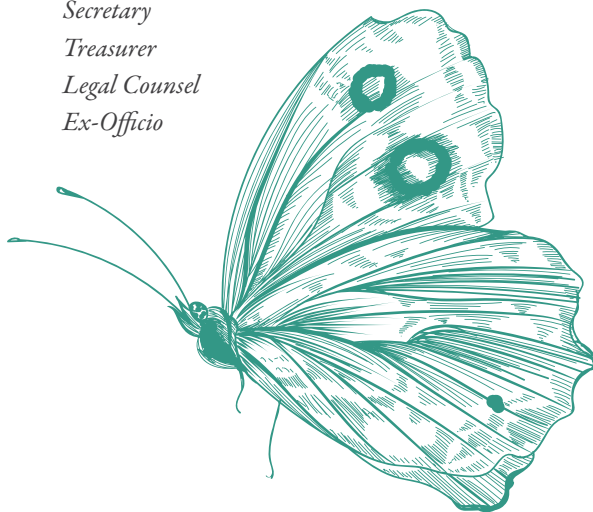

Mary Pat Matheson
Anna and Hays Mershon President & CEO
Atlanta Botanical Garden



2021 EXECUTIVE COMMITTEE

John M. Dyer
John H. Crawford IV
Mason W. Stephenson
Charles W. Cary, Jr.
Kristine M. Brown
Mary Pat Matheson
Paul Cushing
H. Alan Elsas
Roger A. Key
Cody Partin
David P. Poroch
Beth Rummel
Carol B. Tomé

Chair
Vice Chair
Secretary
Treasurer
Legal Counsel
Ex-Officio



TRUSTEES

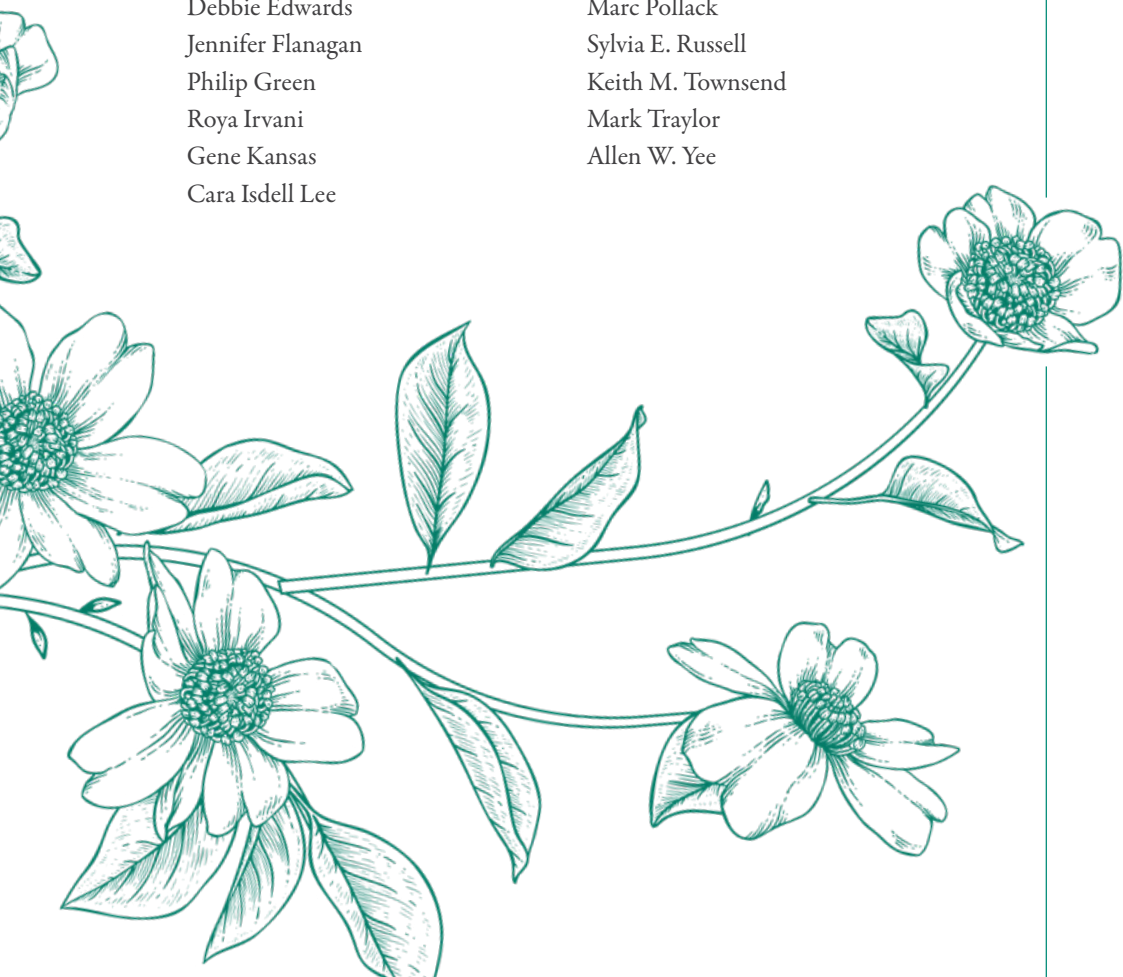
Michael Auzenne
Melissa Babb
Melissa Barra
Molly Battin
Julia W. Cromartie
Debbie Edwards
Jennifer Flanagan
Philip Green
Roya Irvani
Gene Kansas
Cara Isdell Lee

John Lewis, Jr.
Jade A. Logan
Ed McGinn
Vicki Palefsky
Karen Parker
Marc Pollack
Sylvia E. Russell
Keith M. Townsend
Mark Traylor
Allen W. Yee

LIFETIME TRUSTEES

Douglas R. Aldridge
Tricia Allen
Sylvia Attkisson
Mose Bond
Norris A. Broyles, Jr.
Moncure Crowder
George de Man
Mary Wayne Dixon
Flossie Dodge
J. Rex Fuqua
James Gibbs
Shearon Glover
Holcombe T. Green, Jr.
Bernard L. Greer, Jr.
Sylvia Harris
Patricia Hartrampf*
Aileen P. Hatcher
Babette Henagan
Trudy Huger
John J. Huntz, Jr.
David S. Martin
John Hays Mershon
Robert E. Reiser, Jr.
Olive Robinson
Deen Day Sanders
Margaret Shirley
Dean DuBose Smith
James Dean Spratt, Jr.
Harriet Warren
Tom Woodham

**Deceased, May 2022*



2021 BY THE NUMBERS

760,593

Garden guests in both
Atlanta and Gainesville

43,435

member households from
2,719 zip codes



25,114

children served through on-site
and outreach programming

100%

of admission and programming fees
covered for Title I schools



1,585

adults participating in
Garden classes and lectures

142

evenings of live
music featuring 102
different local acts



78,033

brightly-hued streamers in
Poetic Kinetics' first-ever forest SkyNet



100

refugee families supported through Plant.
Eat. Repeat. community outreach.

13

super-sized glass installations
by Seattle-based sculptor Jason
Gamrath

50

miles of string lights
in the 11th annual
Garden Lights, Holiday Nights

350

linear feet of flowing water
in the new Mary Ellen Imlay
Channell Garden



An award-winning year connecting people with plants

In 2021, the Atlanta Botanical Garden was honored to win the prestigious peer-designated **Award for Garden Excellence**, presented by the American Public Gardens Association, for achieving the highest standards in horticultural displays, collections, and sustainability efforts.

APGA President Brian Vogt praised the Atlanta Botanical Garden's "collections-driven approach, ensuring a unique regional style and compelling presentations." Awards Committee Chair Harry Jongerden noted "the Atlanta Botanical Garden's excellence across all public garden attributes from its beautiful, environmentally-informed garden displays to its commitment to regional plant conservation efforts."

*"It's a garden
that does it all,
and it inspires us
all in the public
garden world."*

– Harry Jongerden,
American Public Gardens
Awards Committee Chair



20

scientists, including
three PhD researchers,
on our Conservation &
Research team

29%

increase in conservation
grant funding since 2020,
addressing actions for more
than 50 imperiled species

131,886

plants in the Garden's permanent collections repre-
sented 11,904 taxa and 8,314 species

38,000

pounds of soil and

15,000

plant plugs installed to refresh
the iconic Earth Goddess







YEAR IN REVIEW

ATLANTA'S URBAN OASIS

*Through the changing
seasons, our Midtown
campus is filled with
birdsong and rustling
leaves, fragrant blossoms
and earthy aromas, and
untold beauty in
every direction.*

A stroll in the Garden never fails to delight the senses and invigorate the soul. It also offers endless opportunities to gain knowledge and insights into the marvels of nature in a one-of-a-kind “living museum,” curated by expert horticulturists, showcasing regionally and globally important plant collections that are developed and maintained for the purposes of display, education, research, conservation, and enjoyment.

Each year, a number of indoor and outdoor spaces at the Garden are renovated, ensuring there is always something new to experience. In 2021, we lifted, divided and replanted Sarracenia in the Conservation Bog Garden, refurbished the green wall in the Edible Garden, and redesigned the Butterfly Walk in the Lou Glenn Children's Garden, among other projects. In Storza Woods, a monumental transformation took place—the creation of the stunning new Mary Ellen Imlay Channel Garden.

Designed to harmonize with the iconic John Imlay Bridge in the heart of the woodland, the Mary Ellen Imlay Channel Garden was made possible by a landmark grant from The Imlay Foundation. Now the most significant water feature on our 30-acre site, it flows under the boardwalk near Piedmont Avenue, along an elevated flume, cascading into a sparkling stream before continuing under the bridge and around a picturesque island. Surrounded by lovely gardens with sweeps of artfully arranged camellias, magnolias, rhododendrons, hydrangeas and other shade-loving plants, this new must-see destination draws visitors from the Canopy Walk to explore the winding pathways on the forest floor.





Adjacent areas were refreshed in 2021, including the Glade Garden, which received a vibrant new palette of perennials and a dynamic new focal point—an all-glass Radiant Yellow Icicle Tower by the renowned sculptor Dale Chihuly, replacing the neon Saffron Tower in this woodland clearing. Hundreds of unique terrestrial orchids—including *Bletilla*, *Cypripedium*, *Calanthe*, and *Spiranthes*—were planted alongside the Azalea Walk and throughout Storza Woods, appreciably expanding the Garden’s hardy orchid collection and further complementing the beauty of the Channel Garden.

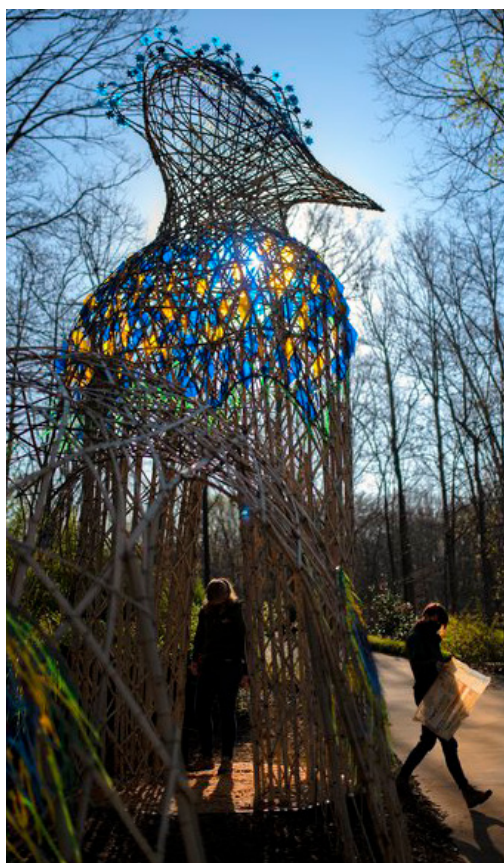


There were certainly many exciting developments in Midtown this year... from tremendous to tiny! The Garden was honored to join the Fox Theatre, Grant Park, State Farm Arena, Georgia Aquarium, and other legendary Atlanta locales where the community can find Tiny Doors ATL, the beloved creations of local artist Karen Anderson Singer. Unveiled at a tiny ribbon cutting ceremony in October, the Garden’s new Tiny Door is tucked into the Vine Arbor next to the Great Lawn, waiting to be discovered on your next visit!



IN OUR GAINESVILLE GARDEN

In 2021, the Atlanta Botanical Garden's Gainesville campus flourished in new and vibrant ways, continuing to set monthly visitation records.



Driven in large part by the popularity of the Ada Mae Pass Ivester Children's Garden, many families discovered the Gainesville garden during the pandemic and returned in winter, spring, summer and fall. Increasingly diverse audiences participated in family-friendly activities and seasonal festivities such as Scarecrows in the Garden and the Holiday Tree Trail.

Plant enthusiasts found abundant inspiration in horticulturally-rich display gardens featuring show-stopping ornamental specimens, southeastern native plants, and brand new cultivars propagated on-site. Once again this year, Gainesville's greenhouses and nurseries were instrumental in helping to grow plants for future installation in both our Midtown and Gainesville gardens.

In addition to cultivating plant material for botanical display, Gainesville also serves as home to two behind-the-scenes nurseries that performed mission-critical work in 2021:

Our 3.5-acre Conservation Safeguarding Nursery—the largest of its kind in the Southeast—maintained key species of concern in a secure environment, with a focus on the rich biodiversity of the wetlands of the southeastern United States including *Sarracenia* species and cultivars, native wetland orchids, active carnivorous plants such as *Dionaea*, *Drosera* and *Pinguicula*, and companion plants including wetland herbs, pollinator plants, native shrubs and grasses.

Our International Plant Exploration Program field nursery continued to evaluate trees, shrubs, and perennials grown from germplasm collected in temperate zones of southeast Asia to determine suitability for gardens in our region.

Through work in these and other targeted areas, the Atlanta Botanical Garden shares knowledge and advances scientific understanding to promote a healthier, greener planet.



A Woodland Legacy



Celestia “Lessie” Smithgall, 1911 - 2021

In 2000, Lessie and Charles Smithgall donated 168 acres near the shores of Lake Lanier to the Atlanta Botanical Garden so that this beautiful wooded property could be enjoyed in perpetuity.

Two decades later, in June 2021, Lessie Smithgall passed away at the remarkable age of 110, and our entire community mourned her loss. Lessie was an incredible woman of great spirit, wit and generosity. She and her late husband Charles had a deep and abiding love of nature and were dedicated to sharing the beauty of the forest with future generations.

The Smithgalls' legacy has blossomed into something truly extraordinary—a remarkable resource for Hall County residents and a beautiful day-trip destination for visitors from near and far—and we are truly indebted to the Smithgalls for their visionary philanthropy.

FOR YOUNG HEARTS AND MINDS

*It's never too early to
spark a love of nature and
a joy of learning—and it
happens every day
at the Atlanta
Botanical Garden.*

Infants in strollers gaze up with wide eyes at sunbeams streaming through the rainforest foliage in the Fuqua Conservatory's Tropical Rotunda. Preschoolers play in the spray at the splash pad in the Lou Glenn Children's Garden and discover where food comes from in the Edible Garden. In the Conservation Bog Garden, older kids peer into carnivorous plants and ponder their astonishing evolutionary adaptations.

During unstructured playtime and garden strolls, the magic of learning often occurs spontaneously and serendipitously. And the magic continues in fun, educational programs led by experienced Garden educators introducing key science concepts to children of all ages.

Our regularly scheduled drop-in family programming proved to be extremely popular in 2021, with some adjustments to incorporate pandemic protocols and to seek shade or sun depending on the season. Parents and caregivers were grateful for a full calendar of safe, stimulating, open-air activities, and families flocked to Storybook Time, Garden Grooves, Shows for Seedlings, and more—all free with Garden admission.

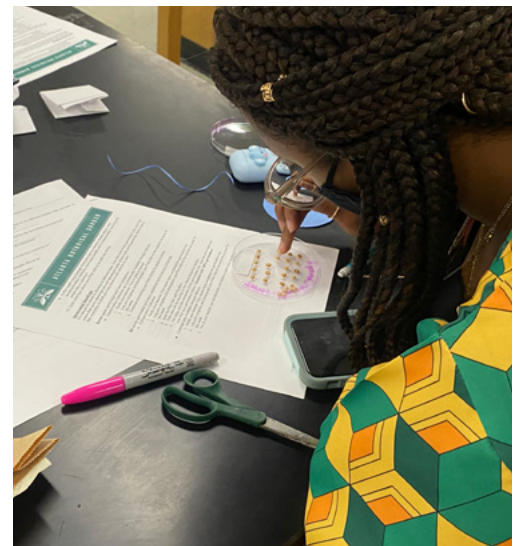
In 2021, our Education team remained nimble, promoting STEM enrichment through innovative livestream virtual field trips, pre-recorded videos, and lesson plan resources that were launched in 2020. Summer camps took place with a modified schedule, and school visits gradually restarted in the Fall 2021 semester. With a focus on outreach to students





at Atlanta-area Title I schools, our Children's Education Initiative provided impactful K-12 experiences aligned with statewide Georgia Standards of Excellence for each grade level.

We continued to innovate throughout the year, with two new offerings for high school students. Southern Seeds—a collaborative effort between Garden scientists and classrooms at South Cobb High School and Booker T. Washington High School—gave students opportunities to germinate seeds from native plant species, to study seed viability, and to learn best practices for conservation seed banking. Another hands-on experiential program, the High School Leadership Summit, coupled horticultural and life-skills training. In these and other programs for teens, the Garden shines a light on potential careers in botany, horticulture, ecology, and conservation science, working to expand and diversify the pipeline of emerging plant scientists while inspiring the changemakers of tomorrow.



OUT IN THE FIELD

From waist-high waders in Gulf Coast wetlands to hiking shoes traversing the ridges of southern Appalachia, the Garden's Conservation & Research scientists had an impressive array of "boots on the ground" in 2021.



After staying close to home for most of the previous year, team members from our Southeastern Center for Conservation fanned out across the region, logging countless hours in the field, conducting ecological research, plant surveys, and habitat restoration projects with long-term goals to protect rare and threatened plants in fragile ecosystems. Highlights include:

Chattahoochee-Oconee National Forest, Georgia

Four of Georgia's Critically Imperiled (S1) wildflower species—*Helianthus smithii*, *Packeria millefolium*, *Solidago simulans*, and *Trillium delicatum*—were the focus of our team's work in federally managed lands this year. Garden scientists painstakingly located and collected seeds and germplasm in the wild, where permitted, and introduced them in ex-situ safeguarding collections, while continuing to glean new insights on these and other rare and threatened species in our state.

Linville Gorge, North Carolina

Mountain golden heather (*Hudsonia montana*) once flourished in shallow, gravelly soils on quartzite outcroppings in North Carolina's Pisgah National Forest; now it is sparsely distributed on just two isolated cliffs in the Linville Gorge wilderness area. Our team recorded locational data for individual plants and obtained small amounts of genetic material from different mother plants to return to the lab in Atlanta. Research is now underway, in collaboration with Georgia Tech, to study root growth architecture in seeds versus vegetative cuttings in order to evaluate propagation strategies for eventual out-planting in the wild.

St. Joseph Bay, Florida

Chapman's rhododendron (*Rhododendron minus* var. *chapmanii*), Florida's only native evergreen rhododendron, is federally endangered yet is currently thriving in areas of the St. Joseph Bay State Buffer Preserve. To ensure that resource actions, particularly prescribed fire, continue to be beneficial for this native shrub, land managers partnered with the Garden's Southeastern Center for Conservation to initiate a demographic study of Chapman's rhododendron in 2021. Fieldwork is also being conducted on two additional Florida panhandle endemics: black-bracted pipewort (*Eriocaulon nigrobacteatum*) and telephus spurge (*Euphorbia telepioides*).

Deer Lake State Park, Florida



Coastal plain pogonia (*Cleistesiosis oricamporum*), Gulf purple pitcher plant (*Sarracenia rosea*), and pine lily (*Lilium catesbaei*) contribute to the rich biodiversity of wetland habitats in the watershed of Florida's globally rare and imperiled coastal dune lakes. Since 2015, the Garden's Conservation & Research team has worked with Florida State Parks to restore 320 acres of this unique ecosystem with a very high concentration of carnivorous plants, including sundews, butterworts, and pitcher plants. In 2021, a three-year collaboration with the University of Florida and Florida State Parks launched to study the impacts and responses of water quality and flow, floristic composition, and amphibian populations of the large-scale restoration at Deer Lake State Park.

In addition to extensive fieldwork, our team led regional and global conservation collaborations, researched population genetics of various imperiled species, developed seed storage protocols, and launched a cryobiotechnology program, among other professional accomplishments. We were also honored to resume our summer internship program in-person in 2021, mentoring 11 students from 6 regional universities while working to strengthen the pipeline of conservation scientists to continue this important work throughout the 21st century.



BEYOND THE GARDEN GATES

*Across the greater Atlanta
region and beyond, the
Garden is a dynamic
catalyst and collaborator,
committed to creating a
healthier, greener world
for all of us.*

Through community outreach and partnerships, we extend our mission-driven work into neighborhoods and classrooms, tackle conservation challenges with government agencies and academic institutions, find common ground with nonprofit organizations, and greatly increase our impact. The Garden's gifted horticulturists, scientists, educators, and innovators not only share their expertise but also roll up their sleeves and dig in, turning visions into reality.

To increase access to fresh produce in areas throughout our city, the Garden developed an innovative urban agriculture program, known as Plant. Eat. Repeat. (PER). Over the past three years, PER has provided hands-on technical assistance and training at community gardens and urban farms, partnering with Food Well Alliance, Truly Living Well, and other service providers in the City to address food insecurity and strengthen local food systems. In 2021, PER collaborated with two nonprofit partners—Clarkston-based Friends of Refugees and Decatur-based Global Growers Network—to create and distribute 200 container gardens to 100 refugee families, along with gardening gloves, hand cultivators, instructional videos and materials in six languages (Nepali, Burmese, Karen, Farsi, Swahili, and Hakha Chin). Made possible with support from the U.S. Botanic Garden and the American Public Gardens Association, this program also assisted families through two growing seasons to help them navigate pest control, watering needs, and other conditions unique to our region.





Another Atlanta Botanical Garden initiative focused on community engagement, the Explore Family Membership Program, celebrated its fourth year in 2021. Launched with significant funding from the Lettie Pate Evans Foundation, this collaboration provides deeply discounted memberships to households of employees at four partner organizations—Atlanta Public Schools, City of Atlanta, Grady Health System, and MARTA—offering teachers, nurses, bus drivers, public safety officers, sanitation workers, and other hard-working individuals on the Covid-19 front lines access to unparalleled opportunities to connect with nature.

Recognizing our vital role in the city’s cultural landscape, the Garden leaped at the chance to partner with Midtown Alliance this year on the initial phase of a new Art Walk stretching five blocks between the Midtown and Arts Center MARTA stations. Anchoring the southern end of this linear park, at the corner of Tenth and West Peachtree streets, Garden horticulturists installed one of our popular mosaiculture pieces, a Lemur leaf frog, which was then christened “Sam Phibian” in a community-wide naming contest. After watering and trimming this living sculpture summer through fall, Garden staff adorned the frog with holiday lights, giving Midtown an extra-special glow to close out 2021.

Looking ahead, the Garden will continue to forge new and deeper partnerships because, by working together, we all grow stronger and cultivate a more vibrant community.



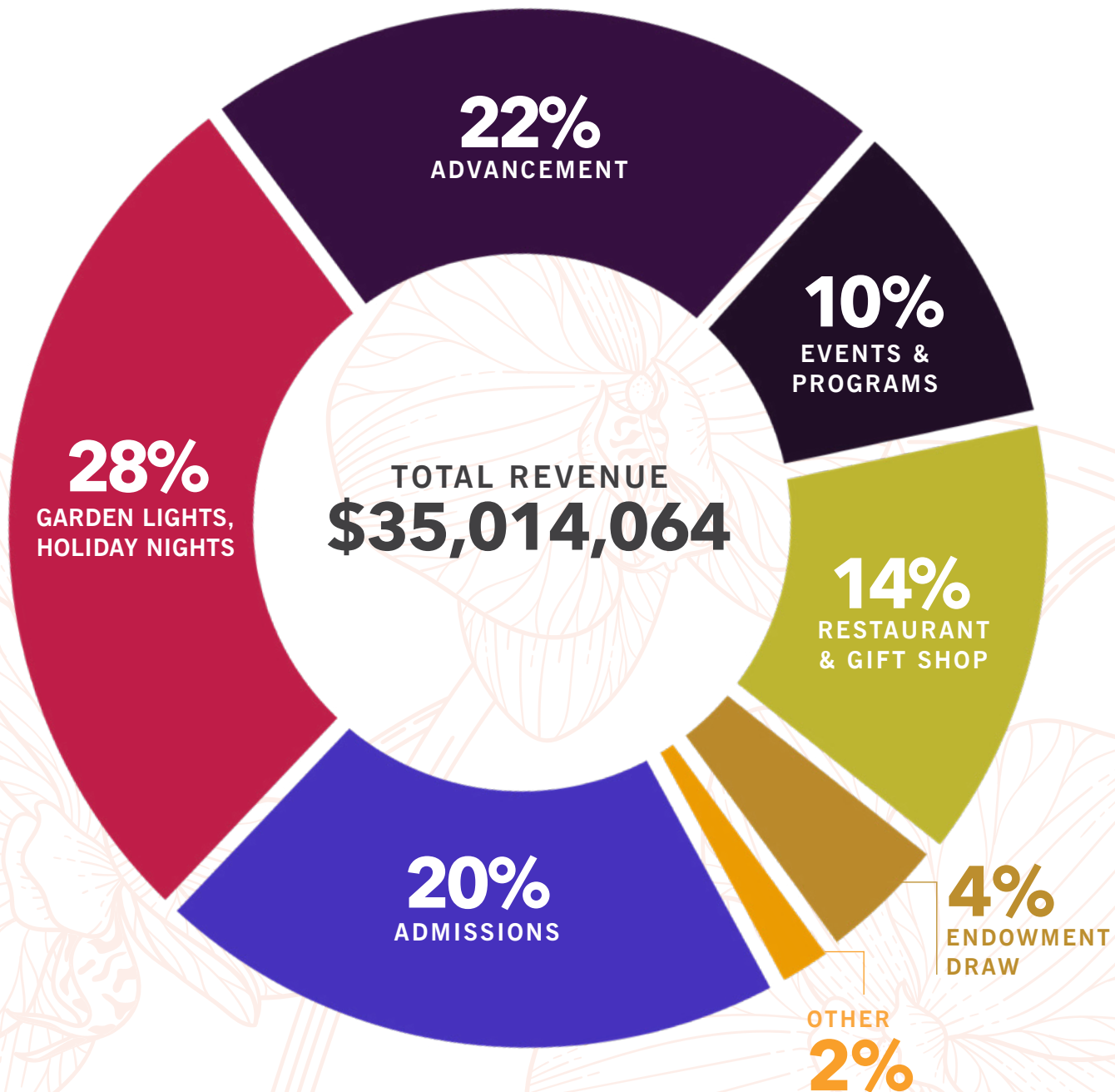


FINANCIAL SUMMARY

statement of activities*

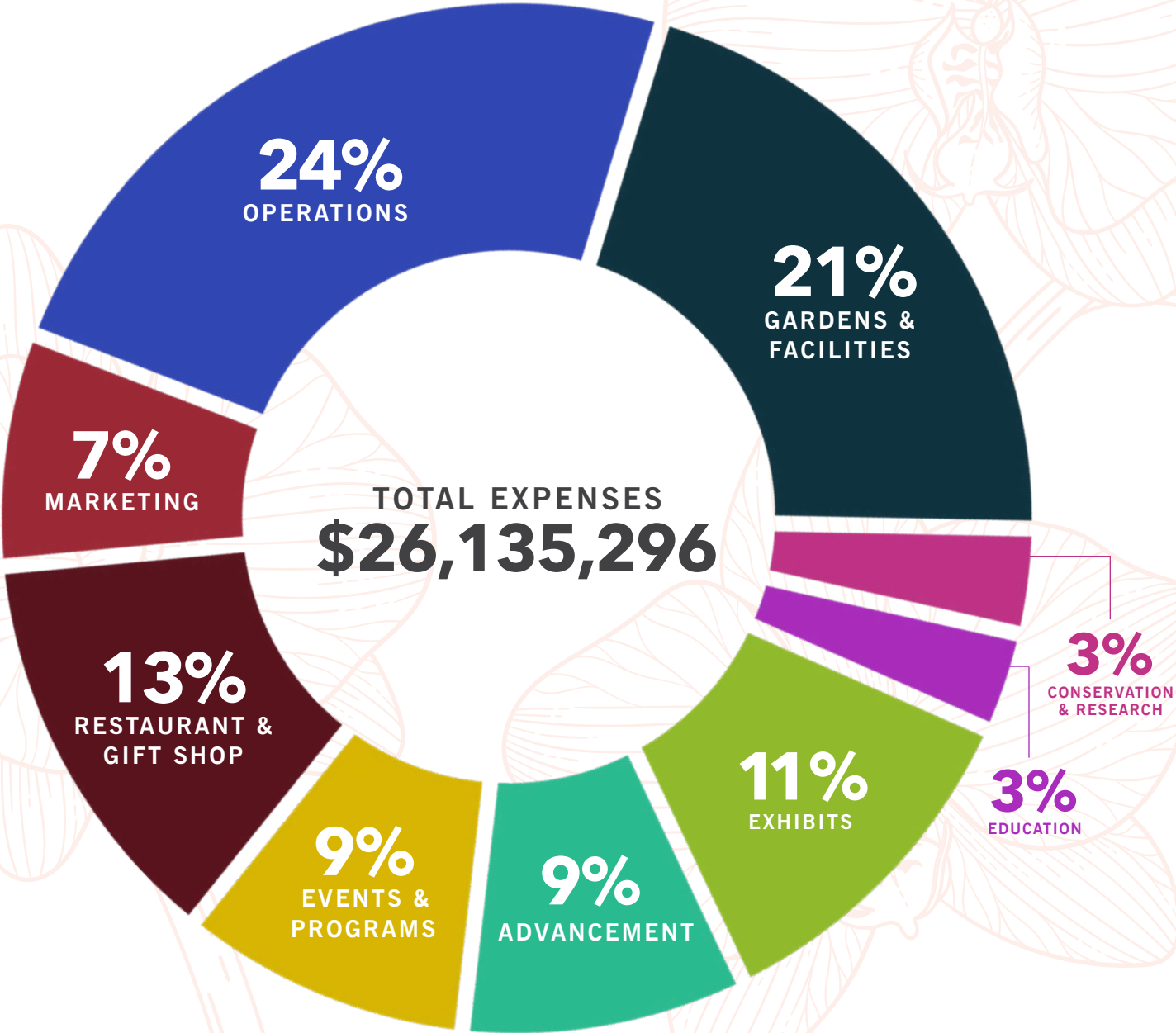
for the 12-month period
ending Dec. 31, 2021

OPERATING REVENUE



This was an extraordinary year for the Garden in a time when we were still surrounded by so much uncertainty. In April 2021, the Garden received a Paycheck Protection Program (PPP) loan which was provided under the federal CARES Act and which was fully forgiven. For the second year in a row, the Garden continued to serve as one of the few open-air cultural institutions where guests and members could safely navigate public activities during the ongoing pandemic. As in previous years, operating profits were reinvested into the Garden through capital maintenance projects, renovations, equipment replacement and repairs, and general improvements. Additionally, in 2021, the Garden's operating profits also allowed us to invest in significant strategic initiatives and programs that support our community.

OPERATING EXPENSES



*Operating revenue and expenses do not include restricted funding for Conservation, Education, or Capital Investments.





GIVING THANKS

to our community of donors

INSTITUTIONS

The Atlanta Botanical Garden gratefully acknowledges the following corporations, foundations, public sector entities, and organizational donors for their contributions between January 1, 2021 and December 31, 2021.

\$500,000 and above

North Georgia Community Foundation

\$250,000 - \$499,999

The Imlay Foundation

Isdell Family Foundation

\$100,000 - \$249,999

The Home Depot Foundation

Invesco QQQ

The L & C Wood Family Foundation

Romanoff Renovations

\$50,000 - \$99,999

Cox Enterprises, Inc.

Georgia Power Foundation

Katherine John Murphy Foundation

The Zeist Foundation

\$25,000 - \$49,999

Delta Air Lines

Audi Atlanta

Ray M. and Mary Elizabeth Lee Foundation

\$10,000 - \$24,999

American Public Gardens Association

Crawford Investment Counsel

The Dozen Dimes Foundation

Fulton County Arts and Culture

Georgia-Pacific

The J.B. Fuqua Foundation

JBS Foundation

The John and Rosemary Brown Family Foundation

Kathryn J. Dinardo Fund

The Martha and Wilton Looney Foundation

PNC Financial Services Group

Wells Fargo Foundation

\$5,000 - \$9,999

The Anise Wallace Foundation

Arrow Exterminators

Emily Bourne Grigsby Charity Fund

The George M. Brown Trust Fund of Atlanta

The Gould Family Foundation

M. Austin Davis Foundation

Stanley Smith Horticultural Trust

The Storey Foundation

Truist Financial Corporation

\$2,500 - \$4,999

Anonymous

The Buchanan Family Foundation

The Catherine H. & John H. Crawford III Family Foundation

Cepharm

Deupree Family Foundation

The Junior League of Atlanta

Kiwanis Club of Atlanta

Planters

The Schroeder Foundation

The William H. & Mattie Wattis Harris Foundation

\$500 - \$2,499

Bobby Dodd Institute

Catholic Foundation of North Georgia

Gardenhood

The Graves Foundation

Janney Montgomery Scott LLC

Joseph G. & Inez Crawford Burtchaeil Foundation

Loren Petersen Family Foundation

The Mary Brown Fund of Atlanta

My Secret Garden

Ralph & Mary Cleveland Foundation

Recess

Sparrow Family Fund

Thomas H. Lanier Family Foundation

Walter G. Canipe Foundation

The Williams Family Foundation of Georgia

INDIVIDUALS

The Atlanta Botanical Garden would like to thank the following individual donors for their generous support between January 1, 2021 and December 31, 2021. Donation levels represent each donor's total giving, including annual fund gifts, Circles and other membership contributions, restricted and unrestricted grants, sponsorships, and/or other operating support.

\$100,000 and above

Brett Finkelstein and Jacqueline Hovarth
Mr. Aaron Ribner

Ms. Margaretta J. Taylor
Nancy Allen Waterfill
Mr. K. Scott Westervelt

\$50,000-\$99,999

Mr. Albert G. Goodgame

\$5,000-\$9,999

Anonymous
Mr. and Mrs. Carleton Allen
Dr. Firelli Alonso and Mr. Jon Crate
Ms. Elkin Goddard Alston
Mr. and Mrs. John G. Alston
Ms. Melissa Babb and Mr. Philip H. Babb
Mr. Robert A. Bartlett
Mrs. Louise L. Billian
Mr. and Mrs. Dameron Black, III
Mr. and Mrs. Paul J. Blackney
Mr. and Mrs. Frank Blake
Mr. and Mrs. Fred Burke
Ms. Bobbi Cleveland and Mr. Stan Jones
Ms. Susan Cobleigh and Mr. George de Man

\$25,000-\$49,999

Anonymous
Dr. and Mrs. Lawrence W. Davis
Mr. and Mrs. J. Rex Fuqua
Mr. and Mrs. James MacGinnitie
Mr. Tim Opler
Mrs. Katharine Rayner

Dr. Ann D. Critz
Ms. Linnie Daniel
Ms. Suzanne M. Dansby
Mr. and Mrs. Peter T. de Kok
Debbie and John Edwards
Ariana and Leroy Fass
Mr. and Mrs. Jeff Fasy
Ms. Christine File
Mr. and Mrs. S. Taylor Glover
Patricia and Karen Goeckel
Mr. and Mrs. Tom Greene
Mr. Martin A. Haber
Ms. Anne E. Hayden
Ms. Nicolette Hennings and Mr. Michael Paulk
Mr. and Mrs. Howell Hollis, III
Mrs. Mary Ellen Imlay
Mr. Ozzie Johnson
Mr. and Mrs. Tom Johnson
DeAnna and Gene Kansas
Cheri and Bill Lennie
Mr. and Mrs. Bertram Levy
Jade A. Logan
Mrs. Lynn Lowance
Mr. and Mrs. John Hays Mershon
Mr. and Mrs. George Nemhauser
Mr. and Mrs. Richard C. Parker
Mr. and Mrs. Gene I. Poland
Mr. and Mrs. Gordon P. Ramsey
Mr. and Mrs. William C. Rawson
Estate of Catherine Rebmann
Cindy and Joseph Ronchetti

\$10,000-\$24,999

Mr. and Mrs. Douglas R. Aldridge
Mr. and Mrs. Duncan Beard
Mr. Steven Behm
Mr. Joseph H. Boland, Jr.
Mr. and Mrs. Glenn Bosio
Heather and Tom Chiller
Mr. and Mrs. William W. Dixon
Mr. and Mrs. H. Alan Elsas
Gayle and Chip Everest
Mr. and Mrs. Martin L. Flanagan
Mr. and Mrs. Donald P. Gatley
Mr. and Mrs. Thomas K. Glenn, II
Mr. and Mrs. Charles Harrison
Mr. and Mrs. John Hatfield
Mr. and Mrs. John J. Huntz, Jr.
Mr. and Mrs. Bahman Irvani
Sharlene and Bob Kaney
Mr. and Mrs. Michael Z. Kay
Ms. Lyn B. Kirkland and Ms. Cheryl Tryon
Mr. and Mrs. W. David Knight
Ms. Linda Lively and Mr. Jim Hugh
Linda and Ed McGinn
Mr. and Mrs. John F. McMullan
Mr. James B. Miller, Jr.
Mr. and Mrs. W. Thomas Mobley, Jr.
Mr. and Mrs. Ray D. Moses
Mr. and Mrs. Howard Palefsky
Sara and Cody Partin
Mr. and Mrs. Craig D. Perry
Robin and Marc Pollack
Mr. and Mrs. Robert E. Reiser, Jr.
Ms. Ruth Magness Rollins
Mrs. Linda Sward

INDIVIDUALS (cont.)

\$5,000-\$9,999 (cont.)

Mrs. Deen Day Sanders and Mr. James R. Sanders, Jr.
Mrs. Janet Schoff and Mr. Richard Nailling
Mr. Roger J. Smith
Mr. and Mrs. H. Bronson Smith
Mrs. Laura S. Spearman
Mr. and Mrs. James D. Spratt, Jr.
Mr. and Mrs. C. Austin Stephens
Mr. and Mrs. Mason W. Stephenson
Mrs. Kay Stueve and Mr. James Stueve

Laura and Sam Sykes
Mr. and Mrs. Phillip A. Theodore
Ms. Carol B. Tomé and Mr. Ramon E. Tomé
The Honorable Ronit Z. Walker and Mr. Matt M. Bronfman
Kay Watson and Kendall Moister
Mrs. Lynne Winship
Mr. and Mrs. Leonard Wood
Charlie and Dancy Wynne
Studie and Zach Young

\$2,500-\$4,999

Anonymous
Ms. Beth Ackerman Krebs and Mr. Paul Krebs
Dr. Joel M. Adler and Mrs. Toni Adler
Ms. Robin Aiken and Mr. Bill Bolen
Mr. and Mrs. Thomas J. Asher
Dr. Tom Bat and Mr. Rod Rusyniak
Mr. Manny Beauregard and Mr. Don Vellek
Jeannie and Matthew Beckettj
Ms. Diana Blank
Mr. Merritt S. Bond
Mr. and Mrs. Mose Bond
Mr. and Mrs. Sam Boyte
Bridget and Scott Brady
Carolyn and Max Brown
Janine Brown and Alex Simmons
Mr. and Mrs. Norris A. Broyles, Jr.
Ashley and Cason Bufe
Drs. Patricia and John Burd
Dr. Peter Burns and Mrs. Dorothy Burns
Mr. and Mrs. Russell E. Butner
Mrs. Carolyn Caswell
Mr. Daniel J. Chen
Mrs. Sidney Gause Childress
Anne B. Clegg
Mrs. Martha Clinkscales and
Mr. David Forquer
Mrs. Susan Coddon
Mrs. Christine Tryba-Cofrin and
Mr. David Cofrin
Mr. and Mrs. John Cromartie
Mr. and Mrs. Paul M. Cushing
Ms. Robin Cutshaw and Ms. Donna Godsey
Mr. and Mrs. John W. Dark
Dr. Teresa Dau and Dr. Amanda McMillan
Dr. Lewis M. Davis, Jr.
Robin Delmer
Robert Ditty
Ms. Ellen Doft and Mr. Alexander Katz
Dr. Joseph P. Dominguez
Mr. and Mrs. David Dorton
Stephanie Dowell and Maney Mazloom
Diana Einterz
Erica Endicott and Christopher Heisel
Mrs. Madonna Engle and Mr. Paul G. Engle
Dr. Charles Epstein and Mrs. Terry Epstein
Margaret Erickson and Nataly Fleishman
Julie and John Fox
Mr. and Mrs. Sam Fraundorf

Ms. Susan Gant
Mr. and Mrs. John T. Glover
Mr. and Mrs. Thomas L. Gossage
Mr. and Mrs. Bernard L. Greer, Jr.
Mr. and Mrs. Luther T. Griffith
Mrs. Robert Griffith, Jr.
Stacy and Peter Haubenschild
Mr. and Mrs. Douglas Hertz
Allison and Ben Hill
Mrs. Kay K. Hodges
Dr. Mark J. Holzberg and
Mrs. Karen R. Holzberg
Angela and William Hoyt
Mrs. Kay Ivester and Mr. M. Douglas Ivester
Cynthia Jeness
Mr. Robert A. Jetmundsen
Ms. Sally C. Jobe
Dr. Leslie Kelman and Mrs. Marilyn Kelman
Emily and Hugh Kendrick
Dr. William R. Kenny and
Mr. Alfred D. Kennedy
Dr. Susan H. Kinsella
Ms. Dorothy Y. Kirkley
Esther and Christopher Kong
Ms. Lisa Korslund
Ms. Liza Kremer and Mr. George Kremer
Mr. George B. Kuzo
Mr. James H. Landon
Mr. and Mrs. E.G. Lassiter, III
Dr. Dorothy E. Mitchell-Leef and
Mr. Forrest I. Leef
Dr. Deborah Levy and Mr. Bert Russo
Mr. and Mrs. John Lewis, Jr.
Ms. Linda H. Lucas
Mrs. Cindy Mallard
Rebecca and James Martell
Mr. and Mrs. David S. Martin
Mr. and Mrs. T. Randolph Merrill
Mr. and Mrs. K. Ward Miller
Ms. Melissa Monk
Mrs. Nancy Montgomery
Dr. and Mrs. Melvin Moore
Mr. Thomas E. Nightingale
Ms. Christy O'Neill
Mrs. Jean Parker
Mrs. Tonya C. Paro and Mr. Steve Paro
Ms. Kathleen Powell
Ms. Denita Pryor
Elizabeth and Thomas Ramsey

Chris and Robert Reddinger
Mr. and Mrs. Charlie Rigby
Mallory Ring
Mr. and Mrs. Roby Robinson
Ms. Stacy Sanford
Mrs. Lynn Saperstein and Mr. Jan Saperstein
Andre Schnabl and Denny Marcus
Ms. Deb C. Schroeder
Alayne and George Sertl
Mrs. Dawn H. Severt and
Mr. Timothy J. Severt
Mr. and Mrs. Thomas L. Shields, Jr.
Beckie and Dave Smith
Mrs. Kim Smith and Mr. Alex Smith
Lynette E. Smith
Mr. and Mrs. Henry N. Staats, IV
Ani and Thomas Steele
Mrs. Frances Stinson
Dr. and Mrs. Stephen Stuk
Sarah and David Sutherland
Mr. and Mrs. Timothy Tassopoulos
Mr. and Mrs. Jason Taylor
Kathleen and Jack Thornton
Keegan Treadaway
Ms. Paula Turner
Mrs. William G. Vance
Pam Wakefield
Stuart L. Ward
Mrs. Harriet Warren
Mrs. Mary Hart Wilheit and
Mr. Philip A. Wilheit
Mr. Matthew Wolfersberger

\$1,000-\$2,499

Mr. John R. Adams
Mr. and Mrs. Walter Adams
Mr. and Mrs. Ivan Allen, IV
Marjorie Anderson and Judith Vanderver
Mary and James Anderson
Ms. Mary E. Anderson
Mrs. Susan Anderson and
Mr. A. James Anderson
Beth and Dean Athanassiades
Mr. Robert J. Bachmann
Mrs. Elizabeth Balentine and
Mr. Robert Balentine
Mr. and Mrs. James S. Balloun
Ms. Patricia T. Barmeyer
Mr. and Mrs. Harold T. Barrett, Jr.

Ms. Eleanor A. Barton
Susan Bass and Tom Bradford
Mrs. Gaylen Baxter and Mr. Jeffrey Baxter
Mrs. Candace Bell and Mr. Jeffrey W. Bell
Mrs. Ida Bell and Mr. James F. Bell, Jr.
Soledad and Jose Bellido
Mr. and Mrs. Matthew C. Berberich
Mr. Lua R. Blankenship, Jr. and
Mr. Dennis R. Kemp
Rebecca and Jacob Blaudow
Mr. and Mrs. Frederick H. Bliss
Katherine and Jesse Bockstedt
Laura E. Brannon
Mrs. Katharine Bremer
Kristy M. Brown
Mr. and Mrs. Paul Brown
Lucy and Henry Bush
Mrs. Janet Cantrelle and
Mr. Donald J. Cantrelle
Mr. and Mrs. Bickerton W. Cardwell, Jr.
Ms. Wendy Carey
Ms. Alison Caughman and
Mr. Wright Caughman
Lynn and Terry Chastain
Ms. Pamela H. Chawkin
Dr. Ping Chen and Dr. Xi Lin
Mrs. Natalie Codelli and Dr. Gregg Codelli
Ms. Edith D. Cofrin
Mrs. Lynn Cogan and Mr. John Cogan
Mr. Chris Colbert
Mr. Robert D. Collins
Mrs. Rita Connell and Mr. Ralph W. Connell
Becky and Courts Cooledge
Mrs. Linda Copeland and Mr. Dean Copeland
Benita Cotton and Franklin S. Orr
Mrs. Pam Covington and
Mr. Dallas M. Covington
Kelly Crowther and Christopher Merrill
Mitch Cupit
Ann and Jim Curry
Lois and Larry Curry
Caroline Jones Davis
Mr. Jim Deffenbaugh and Mr. Gerald Kenna
Ms. Audra Dial and Mr. Matthew Ford
Mrs. Janice Dickson and Mr. Steve Dickson
Judge Mary Grace Diehl and
Mr. Michael Jablonski
Ms. Charlotte Dixon
Dr. Ellis H. Dixon, III
Elizabeth and John Doane
Mr. and Mrs. David T. Dodge
Mr. and Mrs. John R. Donnell, Jr.
Mr. Jack E. Driskell
Byron C. Dye
Diana S. Earwood
Dr. Allen Ecker
Dr. Toni Egolum and Dr. Ugochukwu Egolum
W. Douglas Ellis
Ms. Gail H. Evans
Ms. Tracy M. Field
Ms. Jennifer Fiorenza and Mr. Charles Fiorenza
William R. Fischer
Mrs. Nancy Fischer and Mr. Jeff Fischer
Ms. Jane Fleming and Mr. Andrew Harris
Michael A. Foley and Catherine Tharpe Foley
Ms. Frances Franklin
Mrs. Alice Fraser

Don Freeman
Chris Fritsch
Mr. and Mrs. Carl I. Gable
Mrs. Isabel M. Garcia
Jim Garcia
Ms. Linda Garrett
Mr. L. Tom Gay
Mr. and Mrs. Lawrence L. Gellerstedt, III
Mrs. Karen Ghertner and
Mr. Andrew L. Ghertner
Ms. Sarah E. Gillespie
Corbitt Gipson
Mr. Shawn Gleason
Mrs. Kathi Goddard and
Mr. Robert C. Goddard, III
Debbie and Richard Goldsmith
Dr. and Mrs. Marvin Goldstein
Mrs. Anne Goodsell and Mr. Richard Goodsell
Carolyn and David Gould
Mrs. Carol Grady
Audrey and Scott Graf
Mrs. Marilyn Grist and Dr. William Grist
Mazie Lynn Guertin
Mr. Robert H. Gunn, Jr.
Mrs. JoAnn Haden-Miller and
Mr. Bill G. Miller
Drake and Julie Haley
Ms. Stephanie L. Hamner and
Mr. David Hamner
Sonya N. Harrison
Ms. Aileen P. Hatcher and Mr. Michael McCoy
Ellen Hauck and Markham Smith
David G. Haynes
Lynn Henkel
Elaine and Ingo Hentschel
Bonnie and Terry Herron
Leslie Hettenbach
Dr. Sarah H. Hill and Mr. B. H. Hill, Jr.
Dr. Alice Hood and Mr. David Brown
Mr. David Hopkins
Ms. Kathy Hornbuckle
Mr. and Mrs. Harry C. Howard
Mrs. Ezra F. Howington, Jr.
Mr. and Mrs. William C. Humphreys, Jr.
Stefaniyemiya Ingram
Mr. and Mrs. John S. Inman
Mr. and Mrs. Neville C. Isdell
Mrs. Cameron P. Ives and Mr. David P. Stockert
Mr. and Mrs. Robert Jaeger
Nancy James and Douglas D. James
Yeou-Rong Jih
Mrs. Kenna B. Jones and
Dr. Michael Todd Jones
Emily Williams Jordan
Katie Kardian
Debbie and Roth Kehoe
Kristen Keirseay
Mr. and Mrs. Roger Key
Suzanne and Thad D. King
Emily C. Knobloch
Sandra and Loren Koch
Susan and Brad Koeneman
Sarah Kornegay
Mr. Charles R. Kowal
Ashley Perry and Noah Kronemeyer
Robert S. Lamy
Dr. and Mrs. S. Robert Lathan

Mr. Jay Lazega and Mrs. Susie Lazega
Ms. Deborah K. Levey
S. Jarvin Levison
Mr. Charles R. Lord
Jennifer and Kevin Lyman
Lee MacArthur
Michael Mansfield
Linda Martinson and Andy Stratton
Mr. and Mrs. Walter Mashman
Mary and Mark Matyac
Debi McCullough
Mrs. Sara McDaniel and Mr. Allen McDaniel
Ms. Fluffy McDuffie
Larry V. McIntire
Cathy and Daniel McLagan
Mrs. Angela Meadows and
Mr. Stephen Meadows
Mrs. Eileen Millard and Mr. Chris Millard
Mrs. Maria F. Mixson and
Mr. H. Lamar S. Mixson
Carmen Mohan
Ms. Belinda Morris and Mr. Michael Morris
Dr. Thippeswamy Murthy and Dr. Geetha Rao
Dr. and Mrs. W. Felton Norwood
Mr. and Mrs. Stephan D. Nygren
Regina Olchowski and Edward Potter
Ms. Ellen Olson and Ms. Nora Olson
Mr. Tom Oswald and Mr. Jeff Messerall
Mrs. Frank C. Owens, Jr.
Mrs. Lori Peterson and
Mr. Jonathan M. Peterson
Ms. Margaret Petersen and Ms. Jill Adams
Tracie and David Pitelka
Ms. Lynn Pollard
Sharon and Curtis Pollock
Dr. and Mrs. Morris E. Potter
Michael Proctor
David Pulman
Mr. Daniel B. Rather
Scott and Julie Rayburn
Dr. Mary L. Realff and Mr. Matthew Realff
Jo Anne and Ralph Reed
Cynthia and Gary Reedy
Patty and Doug Reid
Mr. Michael Revitsky and Ms. Cheryl Morgan
Stephen N. Rhoney
Mr. Kirk Rich
Clare S. Richie and Norman Richie
Susan and Chuck Riepenhoff
Betsy and Lee Robinson
John Rodriguez, Jr.
Holly R. Rogers
Teresa Roseborough
Ms. Margaret A. Ross
Scott J. Rossman
Mr. and Mrs. David Schachter
Lauren and Andrew Schlossberg
Donna E. Schwartz
Albert L. Scott
Catharine A. Seay
Shouky Shaheen
Michelle and Raymond Shaw
Nancy and James Sheek
John Shepard
Ms. Rebecca Sherrill and Ms. LeeAnn Jones
Pamela Simyon
Courtney and Brent Smith

INDIVIDUALS (cont.)

\$1,000-\$2,499 (cont.)

Shawn and Ryan Snyder
Mr. Stanley Sonenshine
Paul V. Spiegl
Mr. and Mrs. John C. Staton, Jr.
Douglas Stockel
Mrs. Kay Summers
Anand Swaroop
Helen Tandoh
Yonathan Thio
Ms. Beverly C. Thomas
Brooks Tobey
Christine Tompkins
Zenobia and Joshua Trexler
Julia and Kam Tse
Mrs. Margie Tuckson and Dr. Reed Tuckson
Mr. and Mrs. Timothy C. Tuff
Mrs. Lee Van Leuvan and
 Mr. Richard Van Leuvan
Maggie Victorio and Ron Ferriero
Lloyd and Campbell Walmsley
Ms. Martha Walsh and Dr. Peter Bloland
Alice J. Washington
Kimberly Watson and Halli Watson
Mrs. Jeanne Webers and Mr. Wayne Webers
Anne W. Weltner
Dr. Hamilton Williams and
 Mrs. Marion Williams
Keneeshia N. Williams
Terie and Christopher Williams
Peggy D. Willis
Mrs. Tiffany Wisener and Mr. Steven Wisener
Mrs. Sarah Wood
Mrs. Sherry Wright
Dr. and Mrs. Bill Yang
Mr. Allen W. Yee
Mrs. Jane H. Young
Patricia and Charles Young
Mrs. Judy Zaban Miller and Mr. Lester Miller

\$500-\$999

Dr. Amy J. Aidman and Dr. Uriel Kitron
Sophie Alibaksh and Andy Alibaksh
Mrs. Sheila K. Anderson and
 Mr. Peter J. Anderson
Janelle Anderson
Mr. Shepard B. Ansley
Ms. Patti Arapoglou and Mr. Chris Arapoglou
Mrs. Kathy Argenbright
Mrs. Lynda Ausburn and Mr. Marshall Ausburn
Dr. Lucy Axtell and Dr. John G. Porter
Cheryl Baer and Sara Cleto
Burt Banks and David Barrett
Kathleen Barclay and Thom Barclay
Mr. Thomas A. Barrow, Jr.
Gary Bassell
Ellenda and Milton Bell
Lael Bellamy and Rich Barnard
Mrs. Peggy Benkeser and Dr. Paul Benkeser
Mrs. Jo Ann Bertrand and Mr. Aaron Bertrand
Devin Bird and Andrew Wilkison
Dr. R. Dwain Blackston
Douglas Blue
Mr. and Mrs. Henry L. Bowden, Jr.

Lila Bradley
Mrs. Donna Bradner and
 Mr. J. Lawrence Bradner
Mrs. Patricia A. Bras and Mr. Rafael Bras
Mrs. Renee Bready and Mr. Robert Bready
Jessica Bregman
Kellie and Mauricio Briceno
Dr. Sandra Brim and Mr. James E. Brim, III
Susan and Michael Brooks
Brenda Broun
Ms. Genna Brown
Mrs. Zaneta R. Brown and Mr. Derek Brown
Natalie and Thomas Bryson
Laurel Buchmiller
Dona S. Buchter
Mrs. Natalie Buckareff and
 Mr. Reuben Buckareff
Mrs. Barbara Budd and Mr. George Budd
Mr. Thomas F. Burleigh
Carol Bush and Aubrey Bush
Christophe Cadiou
Dr. and Mrs. Thomas H. Callahan
Mr. and Mrs. James B. Carson, Jr.
Glenn Cartledge
Mrs. Pat Castelli and Mr. Paolo Castelli
Ms. Janet M. Chapman
Dr. Ping Chen and Dr. Xi Lin
Scott Cioffari
Ms. Stephanie Collett and Ms. Deborah Collett
Ms. Casey Cornell and Mr. Ritchie McNally
Jayne Corey
Mr. and Mrs. William R. Cortez
Mrs. Katherine E. Cox
Ms. Sandra Crawford and
 Mr. William R. Koons
Mr. and Mrs. William S. Creekmuir
Mrs. Claire Crumbley and Mr. Alex Crumbley
Cara Curtis and Brian Cossaboom
Dr. Mary Dampier and Dr. Carlton Dampier
Janice Darling and Dave Darling
Jolene and Donald Davis
Marjorie and Trent Davis
Mrs. Judith Deane
Ms. Ruth DeLoor and Mr. Milton Watson, Jr.
Dr. Christopher J. Dente
Jane B. Denton
Natalie and Brandon Denton
Tiffany Devaughn and Yvonne Brown
Rosalyn and Chris Devine
Laura E. Diamond
Mr. and Mrs. Marshall Dinerman
Daryl W. Dunn
Catherine Fare Dyer and John Dyer
Mr. and Mrs. Merritt Dyke
Ms. Francine D. Dykes and
 Mr. Richard H. Delay
Penny and Brian Dyson
Dr. Donna Earley and Mr. Lee Earley
Dr. Linton Eberhardt
Barbara Creel Edgar and Ralph Edgar
Mark Edge
Mrs. Suanne Ellis and Mr. Richard Ellis
Danialle Evans and Jason Evans
Dr. and Mrs. Slade Exley, Jr.

James Eyre
Mrs. Lauran B. Fechte and Mr. Robert J. Fechte
James Fisher
Miss Elizabeth M. Fox
Sallie Fox and Jason Williams
William B. Fyock
Elaine R. Gale
Mrs. Linda Gamble and Mr. John Gamble
Harriet Gentry and Russell Gentry
Catherine C. Gille
Mrs. Jean Glenn and Mr. Jack Glenn, Jr.
Mrs. Suzanne Godfrey and
 Mr. Edward W. Godfrey
Walter E. Gomel
Angela and Robert Gross
Gwen and Marc Gunn
Mrs. Susan Hadorn and Mr. Chris Hadorn
Melissa B. Hall
Aiscia Hampton
Scott Hampton
Mr. and Mrs. Butch Hansen
Jane Harmon and H. Mikell Jones
Rodney Harrell
Mrs. Sara R. Harrington
Pamela and David Harrington
Kathleen and Michael Harrison
Susan M. Hart
Harry and Brenda Hayes
Ms. Cynthia Hays
Dr. Stephanie J. Henklein
Monica Hennings
Darlene Henson
Kathy Hewitt
Colleen and Kenneth Hey
Laura D. Heyward
Dr. Wayne K. Hoffman and Mr. Tom Torrey
Janet Holt and Stephen Daugherty
Deborah C. Hudson
Dr. James M. Hughes and
 Mrs. Pamela P. Hughes
Amy and Larry Hung
Keisha and Eric Hunt
Debra and Tom Hutchinson
Ms. Lin Inlow and Mr. George Inlow
Mr. John Izard, Jr.
Gen Izutsu
Dr. Bill Jackson
Craig Jacobi
Katie and Jamie Jaffe
Dr. Salley Jessee
Denise and Richard Johnson
Madeline and Richard Johnson
Chris and Kevin Kalinsky
Mrs. Donna R. Kallman and
 Dr. Douglas Kallman
Elena Kaplan
Mr. and Mrs. Mark Kauffman
Mrs. Donna Kennedy
Mrs. Veronica H. Kessenich
James Kieffer
Kenneth Kincaid
Harriet Kirkpatrick
Candace Klein
Ms. Jeannie Kostiuk and Ms. Gabrielle Kostiuk

Mrs. Michelle Koufman and Mr. Joseph Koufman
 Nancy Koughan and William Sandidge
 Joan and Jeffrey Krall
 Laurie Kratz
 Michelle and Jason Kroh
 Ms. Linda C. LaManna
 Dr. Katrin Lavell and Ms. Tricia James
 Dr. Herschel Lawson and Ms. Carol Wolf
 Laura P. Ledford
 John Lee
 Kathy and Richard H. Lee
 Dr. Jason Liebreit
 Barbara Lipp and Ronald Lipp
 Peggy Livingston and Colin Martin
 Karen and Dan Losin
 Melissa C. Luck
 Dr. Jennifer A. Lund, Ph.D.
 Dr. Jerre F. Lutz and Mrs. Carlin Lutz
 John Maguire
 Dr. and Mrs. Hugh Mainzer
 Stephene Major
 Julie and Lawrence Marciano
 Abbie Margolies
 Debbie and Keith Markland
 Margaret Marlowe
 Ashley and David Mast
 Mr. and Mrs. Tim Mast
 Mary Anne Ackourey Mathis
 Gloria and Ian McColl
 Angus McFadden
 Mrs. Katherine McMaster and
 Mr. Charles Buchholz
 Amy and Daniel McMorrow
 Mr. Theodore J. Meinhardt and
 Mr. Kevin T. Brady
 Lorin S. Middelthon
 Margaret S. Mines
 Krishna and Raja Mohan
 Sarah M. and William Montgomery
 Beatriz Montoya and Angel Madera
 Dr. Kathryn M. Moore and Ms. Lois Finch
 Robin Moore
 Ms. Anne Morgan and Mr. James F. Kelley
 Christina Morgan
 Mrs. Vicki S. Morris and Ms. Jessica Morris
 W. Hampton Morris and Carter Morris
 Mrs. Thespi Mortimer
 Elizabeth and Allen Moyer
 Melissa Mullinax and Joe Binns
 AliceAnn and Tom Mundy
 Martha Murphy and Dale Murphy
 Ms. Beth A. Nathan and Mr. Robert Nathan
 Dr. Donald Nesbitt and Ms. Laura Tomlin
 Jessica and Ryan Newth
 Gia Nguyen
 Mr. and Mrs. Donald L. Nichols
 Steven and Louise North
 Liza and Ed O'Hare
 Mrs. Becky Orrison and Mr. David Orrison
 Maureen and Thomas O'Shea
 Lila Owens
 Mrs. Alice Paris
 Hetal Patel
 Rise and Iain Paterson

Ms. Patricia M. Percival and Mr. Ken Moorman
 Oona and Peter Pickens
 Joan and Jon Pillow
 Dr. James Powers and Mrs. Christina Powers
 Ms. Diane Quintana and Mr. Nicolas Quintana
 Prof. Mary F. Radford and
 Charles Lee Raudonis
 Juani Randolph and Robert Randolph
 Catrina Rebmann
 Mr. and Mrs. Blake A. Reed
 Karen Rice and Robin Rice
 Lindsay Richards
 Lisa Richardson and Alan Payne
 Ms. Maria Richmond
 Amy Richter and Angie Shelton
 Cynthia Robertson and David Davis
 Galt Robertson
 Mary and Rory Robichaux
 Dr. Eleanore Robinson
 Katherine and James Robson
 Lauren and Bruce Roeder
 Mrs. Darice Rose and Mr. Benjamin Rose
 Kitsy Rose and Delores Sticht
 Beth and Jeff Rummel
 Tammy and William Ruppel
 Mr. and Mrs. Michael J. Rust
 Mr. and Mrs. Robert Safay
 Dr. and Mrs. Rein Saral
 Deserie McCauley and David Savak
 Paula Schlich
 Sherry and Lawrence Schnee
 Leslie and Bernard Schneider
 Catherine and Jack Schultz
 Melissa Segel and John Houlihan
 Joyce Sharpe
 Ms. Carmella Bentley Sheahan and
 Mr. Stephen J. Sheahan
 Mrs. Nancy Sherrod and Mr. S. Albert Sherrod
 Lois and George Shingler
 Ms. Sharon Sigler and Mr. John Sigler
 Lorraine Simons and Tom Simons
 LeTrell Simpson and Charlie Simpson
 Erika M. Sinha
 Mrs. Sandra R. Smith and Mr. Robert C. Smith
 Martha Solano
 Mrs. Carol Sorrow and Mr. Ronald Sorrow
 Mrs. Mildred Spalding and
 Mr. John P. Spalding
 Mrs. Kay Spearman and Mr. Kent Spearman
 Deborah Spurlock and William Spurlock
 Tricia and Mark Steele
 Marilyn and Stanley Steinberg
 Lizanne Stephenson
 Esther and Jim Stokes
 David W. Strickler
 Mr. Jefferson Stutts
 Mrs. Patricia Sykes and Mr. James Sykes
 Suzanne Szabo and Diana DeLaTour
 Wayne Tanner
 Mr. Marc A. Tardif and Mrs. Heather Tardif
 Kra and Domenic Tassoni
 Mr. Clarence Taylor
 Dr. and Mrs. Stanley Tenenbaum
 Dianne and Michael Thackston

Louise Tittsworth
 Cathy Toren
 Mr. and Mrs. Michael W. Trapp
 Susie Trotochaud
 Patricia and Eddie Turner
 Evelyn Twentyman and Evelyn Ford
 Mrs. Roberta Unger and Mr. James Unger
 DeLana K. Valentine
 Andrea R. Vandervort
 Mr. and Mrs. Wayne R. Vason
 Maddy and Jerry Veltri
 Desiree and David Vogt
 Ms. Rose Marie Wade
 Mr. and Mrs. Edwin A. Wahlen, Jr.
 Christopher Waits
 Anita and Fred Wallace
 Jolanda and Guido Walther
 Marsean J. Warren
 Mary Lillie Watson and George R. Watson, Jr.
 Dr. William L. Waugh and
 Mrs. Deborah M. Waugh
 Elizabeth and Scott Webber
 Laura Wellington and Barton Fleming
 Ms. Jan Wendler
 Mrs. Faye Westfall and Mr. David Westfall
 Mrs. Sherrie Wetstone and
 Mr. Jordan Wetstone
 Mrs. Pat Wheeler and Mr. Mark Burks
 Tracy and Matthew Wheelis
 Denise L. Wilbert
 Mr. Ronald Wild
 Elizabeth and Chris Willett
 C. W. Williams
 Dr. Holly Williams and Dr. Art Hansen
 Mary B. Williams
 Pam and David Williams
 Mrs. Sue Williams
 Ms. Maria Williamson and
 Mr. Charles J. Nevinson
 Janice and Thomas Wilson
 Ms. Katrina Winter
 Sarah and Edward Withers
 Mrs. Catherine E. Woodward and
 Mr. Robert Woodward
 Sally and Wade Wright

CIRCLES MEMBERS

The Atlanta Botanical Garden appreciates the members of the Orchid, Magnolia, and Arbor Circles for their generous philanthropic support and contributions to the Garden's vitality. The following list includes both one-year and two-year active memberships as of December 31, 2021.

Orchid Circle (\$10,000 annually)

Mr. Steven Behm
Mr. and Mrs. Charles W. Cary, Jr.
Dr. Lawrence E. Cooper and Mrs. Carol Cooper
Mr. and Mrs. John H. Crawford, IV
Dr. and Mrs. Lawrence W. Davis
Mr. and Mrs. John Dyer
Mr. and Mrs. Martin L. Flanagan
Mr. and Mrs. J. Rex Fuqua
Mr. and Mrs. Peter R. Furniss
Mr. and Mrs. S. Taylor Glover
Mr. and Mrs. Charles Harrison
Babette and Bill Henagan
Mr. and Mrs. John J. Huntz, Jr.
Mr. and Mrs. Bahman Irvani
Mrs. Cara Anne Isdell Lee and Mr. Zak Lee
Mr. and Mrs. Michael Z. Kay
Mr. and Mrs. James C. Kennedy
Mr. and Mrs. W. David Knight
Ms. Linda Lively and Mr. Jim Hugh
Linda and Ed McGinn
Mr. James B. Miller, Jr.
Mr. and Mrs. Ray D. Moses
Sara and Cody Partin
Mr. and Mrs. Craig D. Perry
Robin and Marc Pollack
Mr. and Mrs. Robert E. Reiser, Jr.
Mr. Aaron Ribner
Ms. Ruthie M. Rollins
Mr. and Mrs. H. Bronson Smith
Mrs. Linda Sward
Mr. and Mrs. Alexander Taylor
Ms. Carol B. Tomé and Mr. Ramon E. Tomé
Mrs. Janeen Traylor and Mr. Mark Traylor
Mr. K. Scott Westervelt

Magnolia Circle (\$5,000 annually)

Mr. and Mrs. Douglas R. Aldridge
Mr. and Mrs. Carleton Allen
Ms. Melissa Babb and Mr. Philip H. Babb
Mr. Robert A. Bartlett
Mrs. Natalie Batchelor and Mr. David Batchelor
Mrs. Louise L. Billian
Mr. and Mrs. Dameron Black, III
Mr. and Mrs. Paul J. Blackney
Mr. and Mrs. Frank Blake
Mr. and Mrs. Fred Burke
Ms. Suzanne M. Dansby
Mr. and Mrs. William W. Dixon
Debbie and John Edwards
Mr. and Mrs. Donald P. Gatley
Mr. and Mrs. Thomas K. Glenn, II
Ms. Nicolette Hennings and Mr. Michael Paulk
Mr. and Mrs. Howell Hollis, III
Mrs. Mary Ellen Imlay
Mr. and Mrs. Neville C. Isdell
Cheri and Bill Lennie

Mr. and Mrs. Bertram Levy
Jade A. Logan
Mr. and Mrs. James MacGinnitie
Mr. and Mrs. John F. McMullan
Mr. and Mrs. John Hays Mershon
Mr. and Mrs. W. Thomas Mobley, Jr.
Mr. and Mrs. James H. Morgens
Mr. and Mrs. George Nemhauser
Mr. and Mrs. Howard Palefsky
Mr. and Mrs. David Poroch
Mr. and Mrs. Marbury Rainer
Cindy and Joseph Ronchetti
Mrs. Laura S. Spearman
Mr. and Mrs. James D. Spratt, Jr.
Mr. and Mrs. C. Austin Stephens
The Honorable Ronit Z. Walker and
Mr. Matt M. Bronfman
Mrs. Harriet Warren
Nancy Allen Waterfill and Joe A. Waterfill
Kay Watson and Kendall Moister
Mr. and Mrs. Leonard Wood

Arbor Circle (\$2,500 annually)

Ms. Robin Aiken and Mr. Bill Bolen
Jena Alford
Mr. and Mrs. H. Inman Allen
Dr. Firelli Alonso and Mr. Jon Crate
Andreane and Mike Anderson
Mary and James Anderson
Mr. and Mrs. Thomas J. Asher
Mr. and Mrs. Jerry B. Attkisson
Ms. Marcia Bansley
Ms. Kathleen M. Barksdale
Melissa and Jose Barra
Dr. Tom Bat and Mr. Rod Rusyniak
Ms. Jan Beaves
Jeannie and Matthew Beckett
Mr. and Mrs. Matthew C. Berberich
Mr. Arthur M. Blank
Ms. Diana Blank
Mr. and Mrs. Mose Bond
Mr. Merritt S. Bond
Mr. and Mrs. Sam Boyte
Bridget and Scott Brady
Mr. and Mrs. Charles M. Brewer
Mrs. Lisa Brill and Mr. Ron Brill
Susan and Michael Brooks
Mr. and Mrs. Norris A. Broyles, Jr.
Drs. Patricia and John Burd
Dr. Peter Burns and Mrs. Dorothy Burns
Mr. and Mrs. Russell E. Butner
Heidi and Paul Cantrell
Ms. Candace Carson
Mrs. Carolyn Caswell
Mr. Daniel J. Chen
Ms. Suzanne Christensen and Ms. Jenni Madragona
Anne B. Clegg

Mrs. Martha Clinkscales and Mr. David Forquer
Mrs. Susan Coddon
Mrs. Christine Tryba-Cofrin and Mr. David Cofrin
Kate and Matt Cook
Mr. and Mrs. Thomas G. Cousins
Mr. and Mrs. Paul M. Cushing
Ms. Robin Cutshaw and Ms. Donna Godsey
Mr. and Mrs. John W. Dark
Dr. Teresa Dau and Dr. Amanda McMillan
Amelia Davies
Mr. and Mrs. Peter T. de Kok
Ms. Audra Dial and Mr. Matthew Ford
Ms. Ellen Doft and Mr. Alexander Katz
Mr. and Mrs. David Dorton
Stephanie Dowell and Maney Mazloom
Diana Einterz
Mr. and Mrs. H. Alan Elsas
Erica Endicott and Christopher Heisel
Dr. Charles Epstein and Mrs. Terry Epstein
Maggie Erickson
Mr. and Mrs. Jeff Fasy
Kelsey and Casey Flanagan
Julie and John Fox
Mr. and Mrs. Sam Fraundorf
Ms. Jennifer Fuqua
Mrs. Lauren Fuqua Maronnier and
Mr. Arnaud Maronnier
Carolyn Gibbs and Rick Nelson
Mr. and Mrs. Thomas L. Gossage
Mr. and Mrs. Bernard L. Greer, Jr.
Mr. and Mrs. Luther T. Griffith
Mrs. Robert Griffith, Jr.
Mr. and Mrs. John Hatfield
Stacy and Peter Haubenschild
Ms. Anne E. Hayden
Mr. and Mrs. Douglas Hertz
Allison and Ben Hill
Mrs. Kay K. Hodges
Dr. Mark J. Holzberg and Mrs. Karen R. Holzberg
Angela and William Hoyt
Mr. and Mrs. William C. Humphreys, Jr.
Mrs. Kay Ivester and Mr. M. Douglas Ivester
Cynthia Jeness
Mr. Robert A. Jetmundsen
Sarah and Scott Kagan
DeAnna and Gene Kansas
Emily and Hugh Kendrick
Dr. William R. Kenny and Mr. Alfred D. Kennedy
Minde and Lewis King
Dr. Susan H. Kinsella
Ms. Dorothy Y. Kirkley
Esther and Christopher Kong
Ms. Beth Ackerman Krebs and Mr. Paul Krebs
Ms. Liza Kremer and Mr. George Kremer
Mr. George B. Kuzo
Mr. James H. Landon
Dr. Dorothy E. Mitchell-Leef and Mr. Forrest I. Leef

CIRCLES MEMBERS (cont.)

Ms. Deborah K. Levey
Dr. Deborah Levy and Mr. Bert Russo
Mr. and Mrs. John Lewis, Jr.
Jeannie and Glenn Lightsey
Mrs. Lynn Lowance
Mrs. Cindy Mallard
Rebecca and James Martell
Mr. and Mrs. David S. Martin
Mr. Albert S. McGhee
Liza and Derrick McSwain
Mr. and Mrs. T. Randolph Merrill
Mr. and Mrs. K. Ward Miller
Ms. Melissa Monk
Mrs. Nancy Montgomery
Dr. and Mrs. Melvin Moore
Carly and Peter Nicolay
Ms. Christy O'Neill
Khristal and Tolton Pace
Mr. and Mrs. Richard C. Parker
Mrs. Jean Parker
Mrs. Tonya C. Paro and Mr. Steve Paro
Mr. and Mrs. Samuel J. Pasquarelli
Ms. Kathleen Powell

Mr. and Mrs. James E. Prickett
Ms. Heather Prill
Ms. Denita Pryor
Mrs. Mary Anne Quin
Mr. and Mrs. Gordon P. Ramsey
Mr. and Mrs. William C. Rawson
Chris and Robert Reddinger
Mr. and Mrs. Charlie Rigby
Mallory Ring
Mr. and Mrs. Roby Robinson
Sylvia E. Russell
Stacy Sanford
Mrs. Deen Day Sanders and
 Mr. James R. Sanders, Jr.
Mrs. Lynn Saperstein and Mr. Jan Saperstein
Mr. and Mrs. David Schachter
Lauren and Andrew Schlossberg
Andre Schnabl and Denny Marcus
Kellie and Erik Schonberg
Mrs. LuAnne Schwarz
Mrs. Dawn Severt and Mr. Timothy J. Severt
Mr. and Mrs. S. Albert Sherrod
Mr. and Mrs. Thomas L. Shields, Jr.

Beckie and Dave Smith
Mrs. Kim Smith and Mr. Alex Smith
Lynette E. Smith
Mr. Roger J. Smith
Mr. and Mrs. Henry N. Staats, IV
Linda and Mason Stephenson
Mrs. Frances Stinson
Mrs. Kay Stueve and Mr. James Stueve
Dr. and Mrs. Stephen Stuk
Sarah and David Sutherland
Ms. Margaretta J. Taylor
Mr. and Mrs. Jason Taylor
Kathleen and Jack Thornton
Mr. and Mrs. Keith Townsend
Ms. Paula Turner
Mrs. Lucy Vance
Pam Wakefield
Stuart L. Ward
Mrs. Mary Hart Wilheit and Mr. Philip A. Wilheit
Baade L. Wilson and Roger Wilson
Mr. and Mrs. George Wolfes
Ms. Lisa Yeager and Mr. Robert Ditty
Studie and Zach Young

CONSERVATION PARTNERS

The Garden would like to thank the following organizations for their meaningful involvement and support in conservation and research initiatives between January 1, 2021 and December 31, 2021:

Anonymous
American Public Gardens Association
Association of Zoological Horticulture
Auburn University
Botanic Gardens Conservation International
Center For Plant Conservation
Chicago Botanic Garden
Cincinnati Zoo & Botanical Garden
Emory University
Florida Native Plant Society
Florida State Parks
Fondation Franklinia

Georgia Department of Natural Resources
Georgia Institute of Technology
Georgia Plant Conservation Alliance
Gulf Environmental Benefit Fund
Institute for Museum and Library Services
Jardín Botánico de Medellín
Jacksonville Zoological Society
Montgomery Botanical Center
The Morton Arboretum
National Fish & Wildlife Foundation
Office of Kentucky Nature Preserves
Peachtree Garden Club

Smithsonian Environmental
 Research Center
Southeastern Plant Conservation
 Alliance Partners
University of Florida
University of Georgia
University of Guadalajara, Mexico
US Environmental Protection Agency
US Fish & Wildlife Service
USDA Forest Service

MATCHING GIFTS

The Garden received matching contributions from the following companies:

Avanos Medical
Carrier
The Coca-Cola Company
Community Foundation for
 Greater Atlanta

Google
IBM
Johnson & Johnson Family of Companies
Macy's
Microsoft

R. Howard Dobbs, Jr. Foundation
Synchrony Financial
Tull Charitable Foundation
XL Catlin

PERENNIAL SOCIETY

The Atlanta Botanical Garden would like to express heartfelt gratitude to all members of the Perennial Society who have thoughtfully included the Garden in their estate planning. As a result of the legacy commitments of these philanthropic individuals and families, the Garden will continue to flourish for generations to come.

BENCH DONATIONS

Gifts of \$10,000 were made by friends and family to name Garden benches honoring the following individuals:

In honor of Eleanor Craig and Patsy Gooch
In honor of Katharine Elsas
In honor of grandchild, Hattie
In honor of grandchild, Nell
In memory of Theodora "Teddy" Haber

In memory of Mary Ann Hearn
In honor of Sharlene and Bob Kaney
In memory of Kun Lin
In memory of Ho Ru-Jian and Cheng Ying-Yao

TRIBUTE GIFTS

The following friends of the Garden were honored or remembered in 2021:

Janet Aldridge
Nancy B. Alexander
Elkin Goddard Alston
Corey Armstrong
Robert Ashmore
Carol Bassuener
Denny Richardson Bellingrath
Shirlee R. Blum
Sheila Bressler
Frank Bridges
Martha Bromberek
Joan Brown
Marilynn Camburn
Polly Camp
Joan G. Carson
Dragoljub Cepic
George Cohen
Theresa "Terry" Marie Congie
Robin Desforges
Akiko DiFrancesco
Mary Wayne Dixon
Elsa Duel
Sanford Dunklin
Sandra Key Taylor Ecker
Mona Lynn Elliott
Gail Evans
Kay Fielding
Sally Finkelstein

Mary R. Fischer
Jennifer and Marty Flanagan
Letha Gallt
Faye Dyer Graham
Susan Greenfield
Emily Bourne Grigsby
Ebbe Gustafson
Louise Evelyn Witt Hampton
Ardythe Harlow
Katharine Herring
Isabelle Collier Lamar Hines
Linda Hower
Nanci Hunter
Sean Hurley
Monique and Oliver Jackson
Jeff Jaeger
Glower W. Jones
Lou Jones
Renee Kaufman
Renee Kittel
Bianka Kucelin
Mary Jo Lones
Lucille "Lulu" Perez Lopez
Maloy Love
Mary Orr Williams Lowrey
Susan Manusama
Hays Mershon
Brad Mills

Patricia Mines
Laura Morgan
Thespi Mortimer
Annie Nord
Lois W. O'Lone
Andrew Olson
Sue Payne
Kelsey Price
Catherine Rebmann
Mr. and Mrs. Roby Robinson
Mr. Vincent M. Scarcella
Michael D. Sheek
Michael Joel Sloan
Dean DuBose Smith
Celestia "Lessie" Smithgall
Linda and Mason Stephenson
Aina Stratton
Ann Stringer
Gayle Swift
Betty Van Houten
Duke Walker
Mary Charles Wilmer
Diane Winfield

Every attempt has been made to ensure the accuracy of this document. If we have omitted anyone or made any errors, please accept our sincere apologies and contact us at 404-585-2015 so that we may correct our records.







CELEBRATING
our community of volunteers

BETTER TOGETHER

*In 2021, a total of 315
volunteers regularly
donated their talents and
time to benefit the Garden
in countless ways.*



Working closely with staff, in almost every aspect of Garden operations, volunteers performed vital tasks such as greeting guests, beautifying the grounds by helping to install and maintain horticultural displays, serving as docents, and assisting with a wide range of programs and events. We truly could not accomplish all that we do without significant volunteer support at both Atlanta and Gainesville locations, and we are indebted to our volunteers for their service.

Volunteer hours in 2021 increased 23% over the previous year, to a total of 20,200 hours, with careful protocols in place to prioritize the health and safety of all. Although volunteer activities may have been carried out differently throughout the year, in response to the changing environment, our volunteers remained steadfast in their commitment to helping the Garden grow.

Centennial Club

For the second year in a row, the threshold for Centennial Club volunteer service was adjusted from 100 hours to 60 hours in response to the pandemic. A total of 150 individuals each contributed more than 60 hours during 2021, and we are extraordinarily grateful for their dedication to the Garden's mission.

Roots of the Garden

The following volunteers are distinguished for providing more than 200 hours of service in 2021:

Charlotte Miller	525	Anne Boyte	279
Janet Cantrelle	330	Ann Bentsen	258
Diane Korzeniewski	304	Jim Mallory	250

2021 Volunteers of the Month

The following Atlanta-based volunteers were nominated by their staff supervisors for showing devotion and enthusiasm in their roles:

Cindy Kelly	Theresa McDugald
Merideth Northcutt	Tatyana Fershtat
Anne Carley	Janet Cantrelle
Chris File	Eve Goldstein
Ann Bonislawski	Angie Meadows
Kathy Bronaugh	Denise Bomberger

2021 Volunteers of the Quarter

The following Gainesville-based volunteers were nominated by their staff supervisors for showing devotion and enthusiasm in their roles:

Cindy Hodge
Mikiko Lockwood
Dan McDaniel
Maureen Smith



2021 VOLUNTEER OF THE YEAR: JANET CANTRELLE

Since 2016, Janet has worn many “volunteer hats” including Discovery Volunteer and Docent. She has served as a member of our Garden Essential Maintenance (GEM) team, working on weeding, planting, and maintenance in Storza Woods, and she also spends time assisting in the Orchid Center, helping with classes, volunteering for Garden Lights, Holiday Nights, and lending a hand with office projects, member evenings, and other programming. In each of these roles, she is extraordinarily helpful and energetically engages with guests to enhance their experience during visits and tours. Twice named Volunteer of the Month (in 2017 and 2021), Janet has also been recognized as a Root of the Garden for the past five consecutive years, during which time she has donated more than 2,000 hours of volunteer service to help the Garden grow.



ATLANTA BOTANICAL GARDEN

1345 Piedmont Avenue NE
Atlanta, Georgia 30309
404-876-5859
atlantabg.org

1911 Sweetbay Drive
Gainesville, Georgia 30501
404-888-4760
gainesvillegarden.org



**American
Public Gardens
Association**
PROUD MEMBER



BGCI