



ATLANTA
BOTANICAL
GARDEN

Gainesville

fabulous FLOWERS



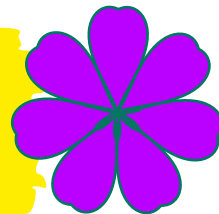
Learning in
the Garden
Grades 1-2

Welcome to the
Atlanta Botanical Garden
Gainesville!

This packet contains **fabulous**
activities and **brain-boggling** questions
to challenge your group in the Garden.

garden adventure pack

INSTRUCTIONS



What is the reason for a flower? Use your powerful observation skills to learn about the parts of a flower and to watch pollinators hard at work in the Garden! Available April – October.

GEORGIA PERFORMANCE STANDARDS:

S1CS1.a, S1CS3.a, S1CS4.a, S1CS4.c, S1CS5.a S1CS5.b,
S1L1.c, S1L1.d
S2CS1.a, S2CS3.a, S2CS4.b, S2CS4.d, S2CS5.a, S2CS5.b,
S2L1.a, S2L1.c

Materials needed (these will not be provided):

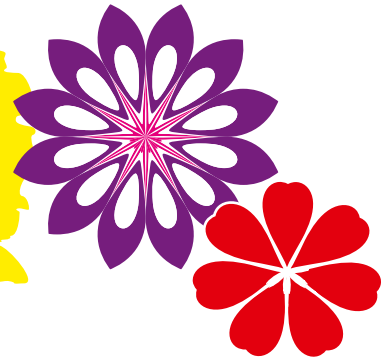
- Magnifying Lenses
- Ziplock bag of crayons
- Butterfly Identification Guide
- Flower Parts Laminated Guide
- Pollination Observation worksheets
- Drawing pages and printed packet guide

GARDEN ETIQUETTE:

1. Do not pick any leaves or flowers from a living plant. It is ok to pick up items and leaves from the ground, but please return them before exiting the Garden.
2. Please stay on the paths or on lawns. Walking off trail may harm growing plants.
3. Children must always be supervised by chaperones.
4. Have fun!

Learning in
the Garden
Grades 1-2

flower INTRODUCTION



SUGGESTED LOCATION

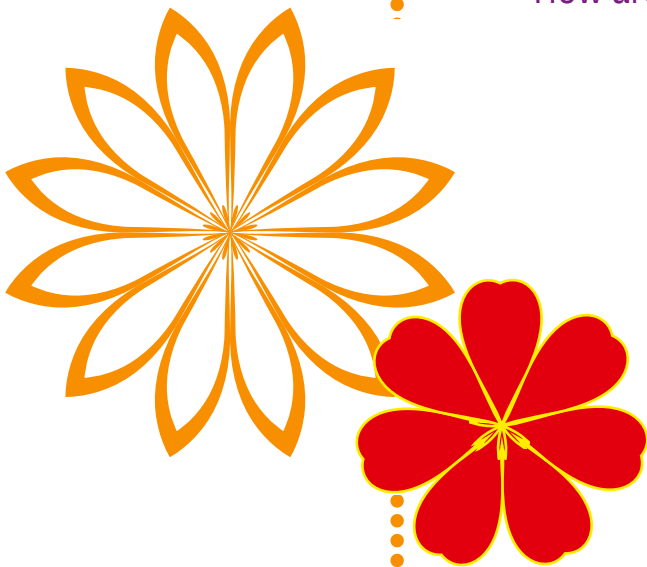
Woodland Promenade, Event Lawn or
Kay & Douglas Ivester Visitor Center Patio

ACTIVITY

Find a quiet for your group.

Before beginning ask the students to share with
you what they know about flowers.

- How would they describe a flower to someone who has never seen one before?
- Do they know the reason for a flower?
- What kinds of animals visited the flowers?
- What are those animals called (pollinators)?
- How are these flowers different?
- How are these seeds different?



flower EXPLORATION



SUGGESTED LOCATION

Woodland Promenade

MATERIALS

Parts of a Flower diagram
Magnifying lenses

ACTIVITY

Find a fairly large flower that your students can all see. Show your students the Parts of a Flower image and compare it with the flower you are observing.

Can you see all the parts of a flower?

Can you see any pollen?

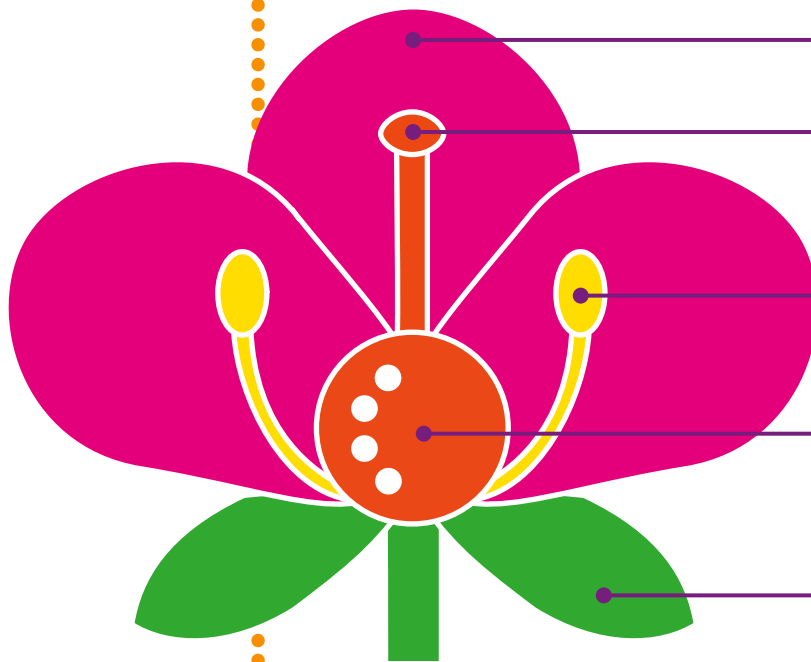
How does your flower look different or similar to the image?

Please remember to handle and touch flowers gently.

Let students take turns looking at the flower with the magnifying lenses. Can they see any other parts when they look more closely? How does the flower look different under the magnifying lens?

flower EXPLORATION

FLOWER PARTS



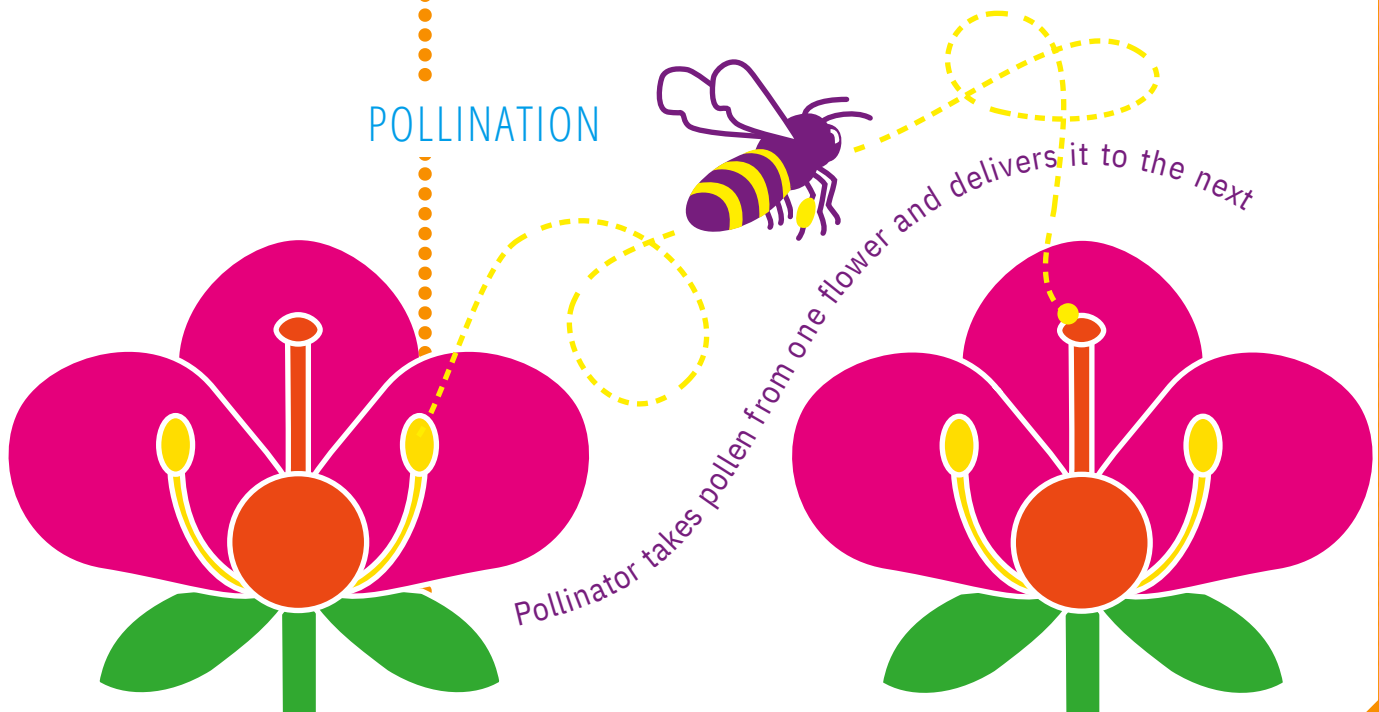
Bright petals
attract pollinators

Sticky stigma
catches pollen

Anthers hold
yellow pollen
Ovary becomes
the fruit with
seeds inside

Sepals protect
flower buds

POLLINATION



Pollinator takes pollen from one flower and delivers it to the next

flower EXPLORATION



OBSERVATIONS

Find other flowers along the path...

How are they similar or different?

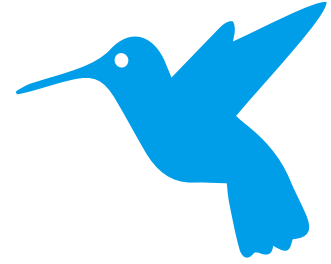
Also, keep an eye out for seeds. Sometimes you can even see a wilted flower attached to a seed!

Point out any bees or butterflies along the way.
Stop and observe one bee or one butterfly for a few moments.

What are they doing when they visit the flower?

pollination

OBSERVATION



SUGGESTED LOCATION

Glade Garden or Stream Garden

MATERIALS

Pollination Observation Worksheet
Crayons

ACTIVITY

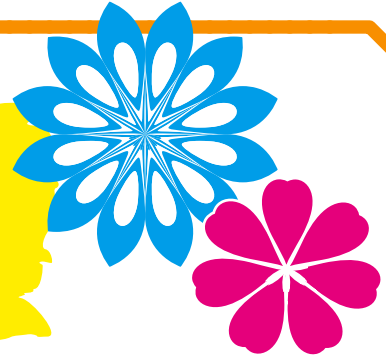
Find a spot that has lots of flowers and pollinators (bees, butterflies, flies). Pass out the worksheet to each of your students. Read through the worksheet and the instructions.

Let the students choose a flower to observe – encourage them to choose a flower that is currently being visited by pollinators. Give them a couple of minutes to draw a picture of their flower. Afterwards, give the students two minutes to observe their flower and tally up how many insects are visiting their flower.

Discuss the results with your students. What was the most common pollinator they saw on their flower? What were those pollinators doing when they visited the flower? Did they see pollen on any of the pollinators?



pollination OBSERVATION



Draw a picture of the plant's flower



by: _____

pollination OBSERVATION



WATCH your plant for two minutes.

Many kinds of animals are pollinators.

Insects are animals too!

Draw one **DOT** in the box below for each animal that visits your plant's **FLOWER**.

Butterflies



Beetles or Ants



Bees or Wasps



Flies



Birds



When time is up,
COUNT all the **DOTS**.
Write this number below.

This is the total pollinators
that visited your plant!



TOTAL
Pollinators

Which pollinator visited
your plant's flower the most?

butterfly IDENTIFICATION

SUGGESTED LOCATION

Throughout the Garden

MATERIALS

Butterfly ID Guide

ACTIVITY

When you or your students see a butterfly or caterpillar in the Garden, try to identify it with the Butterfly ID Guide.

Once identified, take a moment to look at the different life stages of the butterfly.

How does a butterfly look different from a caterpillar?

What are the different stages of life for a butterfly (egg, larvae/caterpillar, pupa/chrysalis or cocoon and adult/butterfly)?

How do plants fit into the life cycle of a butterfly?

